

## AF/LE Purified Anti-Human CD2 Antibody[TS1/8]

catalog number: E-AB-F11480

**Note:** Centrifuge before opening to ensure complete recovery of vial contents.

### Description

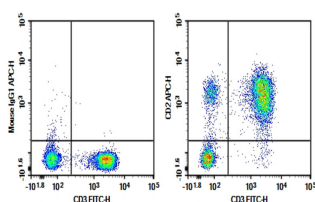
<b>Reactivity</b>	Human
<b>Immunogen</b>	Recombinant Human CD2 protein
<b>Host</b>	Mouse
<b>Isotype</b>	Mouse IgG1, $\kappa$
<b>Clone</b>	TS1/8
<b>Purification</b>	>98%, Protein A/G purified
<b>Buffer</b>	Sterile PBS, pH 7.2. < 1.0 EU per mg of the antibody as determined by the LAL method.

### Applications

### Recommended Dilution

<b>FCM</b>	2 $\mu$ g/mL( $0.5 \times 10^6$ - $1 \times 10^6$ cells)
------------	--

### Data



Verified Samples in FCM: Human peripheral blood lymphocytes

### Preparation & Storage

<b>Storage</b>	Store at 4°C valid for 12 months or -20°C valid for long term storage, avoid freeze / thaw cycles. This preparation contains no preservatives, thus it should be handled under aseptic conditions.
<b>Shipping</b>	Ice bag

### Background

CD2 is a type I glycoprotein belonging to the Ig superfamily and is expressed on T cells, NK cells, B cells and some antigen presenting cells. Human CD2 binds human CD58 on antigen-presenting cells to induce co-stimulating signals in T cells.

### For Research Use Only