

## Recombinant Human TMPO Protein (His Tag)

**Catalog Number:** PKSH033116

**Note:** Centrifuge before opening to ensure complete recovery of vial contents.

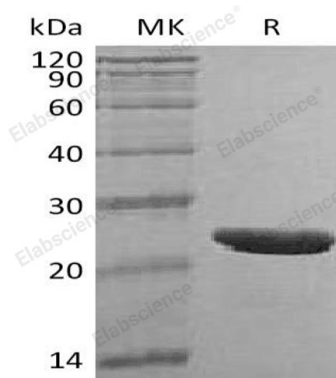
### Description

<b>Species</b>	Human
<b>Source</b>	E.coli-derived Human TMPO protein Met1-Glu187, with an C-terminal His
<b>Calculated MW</b>	21.6 kDa
<b>Observed MW</b>	27 kDa
<b>Accession</b>	P42167
<b>Bio-activity</b>	Not validated for activity

### Properties

<b>Purity</b>	> 95 % as determined by reducing SDS-PAGE.
<b>Endotoxin</b>	< 1.0 EU per µg of the protein as determined by the LAL method.
<b>Storage</b>	Generally, lyophilized proteins are stable for up to 12 months when stored at -20 to -80 °C. Reconstituted protein solution can be stored at 4-8°C for 2-7 days. Aliquots of reconstituted samples are stable at < -20°C for 3 months.
<b>Shipping</b>	This product is provided as lyophilized powder which is shipped with ice packs.
<b>Formulation</b>	Lyophilized from a 0.2 µm filtered solution of PBS, pH 7.4. Normally 5% - 8% trehalose, mannitol and 0.01% Tween 80 are added as protectants before lyophilization. Please refer to the specific buffer information in the printed manual.
<b>Reconstitution</b>	Please refer to the printed manual for detailed information.

### Data



> 95 % as determined by reducing SDS-PAGE.

### Background

Thymopentin is a member of the LEM family. Thymopentin is expressed in many tissues, highly in the adult thymus and fetal liver. The N-terminal contains two structurally independent domains, LEM domain and LEM-like domain. The C-terminal domain forms a four-stranded coiled coil. Thymopentin may be involved in the structural organization of the nucleus and in the post-mitotic nuclear assembly. It is associated with T-cell development and function. Meantime, Thymopentin plays an important role, together with LMNA, in the nuclear anchorage of RB1. Thymopoietin is participated in the induction of CD90 in the thymus.

### For Research Use Only