

SMPD2 Polyclonal Antibody

catalog number: E-AB-19030

Note: Centrifuge before opening to ensure complete recovery of vial contents.

Description

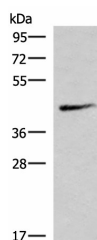
Reactivity	Human;Mouse;Rat
Immunogen	Fusion protein of human SMPD2
Host	Rabbit
Isotype	IgG
Purification	Antigen affinity purification
Conjugation	Unconjugated
buffer	Phosphate buffered solution, pH 7.4, containing 0.05% stabilizer and 50% glycerol.

Applications

Recommended Dilution

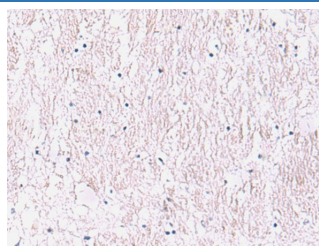
WB	1:1000-1:5000
IHC	1:50-1:300

Data



Western blot analysis of Mouse lung tissue lysate using SMPD2 Polyclonal Antibody at dilution of 1:1000

Observed-MV: Refer to figures
Calculated-MV: 48 kDa



Immunohistochemistry of paraffin-embedded Human brain tissue using SMPD2 Polyclonal Antibody at dilution of 1:90 (x200)

Preparation & Storage

Storage	Store at -20°C Valid for 12 months. Avoid freeze / thaw cycles.
Shipping	The product is shipped with ice pack, upon receipt, store it immediately at the temperature recommended.

Background

This gene encodes a protein which was initially identified as a sphingomyelinase based on sequence similarity between bacterial sphingomyelinases and a yeast protein. Subsequent studies showed that its biological function is less likely to be as a sphingomyelinase and instead as a lysophospholipase.

For Research Use Only