

## Recombinant Human CD23 Protein (His Tag)

**Catalog Number:** PKSH033432

**Note:** Centrifuge before opening to ensure complete recovery of vial contents.

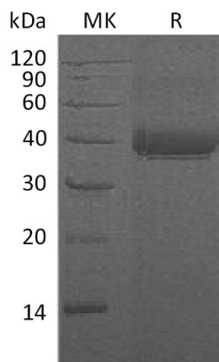
### Description

<b>Species</b>	Human
<b>Source</b>	HEK293 Cells-derived Human CD23 protein Asp48-Ser321, with an N-terminal His
<b>Calculated MW</b>	32.1 kDa
<b>Observed MW</b>	35-40 kDa
<b>Accession</b>	P06734
<b>Bio-activity</b>	Not validated for activity

### Properties

<b>Purity</b>	> 95 % as determined by reducing SDS-PAGE.
<b>Endotoxin</b>	< 1.0 EU per µg of the protein as determined by the LAL method.
<b>Storage</b>	Generally, lyophilized proteins are stable for up to 12 months when stored at -20 to -80 °C. Reconstituted protein solution can be stored at 4-8°C for 2-7 days. Aliquots of reconstituted samples are stable at < -20°C for 3 months.
<b>Shipping</b>	This product is provided as lyophilized powder which is shipped with ice packs.
<b>Formulation</b>	Lyophilized from a 0.2 µm filtered solution of PBS, pH 7.4. Normally 5% - 8% trehalose, mannitol and 0.01% Tween 80 are added as protectants before lyophilization.
<b>Reconstitution</b>	Please refer to the specific buffer information in the printed manual. Please refer to the printed manual for detailed information.

### Data



> 95 % as determined by reducing SDS-PAGE.

### Background

Low affinity immunoglobulin epsilon Fc receptor(CD23) is a secreted and single-pass type II membrane protein which is also exists as a soluble excreted form. There are two forms of CD23: CD23a and CD23b. CD23a is present on follicular B cells, whereas CD23b requires IL-4 to be expressed on T-cells, monocytes, Langerhans cells, eosinophils, and macrophages. Unlike many of the antibody receptors, CD23/FCER2 is a C-type lectin. It is found on mature B cells, activated macrophages, eosinophils, follicular dendritic cells, and platelets. In flow cytometry, CD23/FCER2 is helpful in the differentiation of chronic lymphocytic leukemia (CD23-positive) from mantle cell leukemia (CD23-negative). CD23/FCER2 can also be demonstrated in germinal centre B-cells using immunohistochemistry, but it is not present in the resting cells of the surrounding mantle zone. CD23/FCER2 has essential roles in the regulation of IgE production and in the differentiation of B-cells (it is a B-cell-specific antigen).