

## AF/LE Purified Anti-Human CD20 Antibody[2H7]

catalog number: E-AB-F12120

**Note:** Centrifuge before opening to ensure complete recovery of vial contents.

### Description

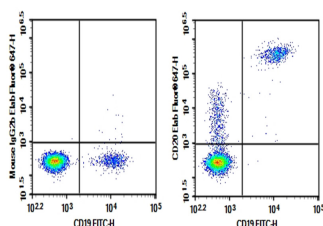
<b>Reactivity</b>	Human
<b>Immunogen</b>	Recombinant Human CD20 protein
<b>Host</b>	Mouse
<b>Isotype</b>	Mouse IgG2b, $\kappa$
<b>Clone</b>	2H7
<b>Purification</b>	>98%, Protein A/G purified
<b>Conjugation</b>	None (AF/LE)
<b>Buffer</b>	Sterile PBS, pH 7.2. < 1.0 EU per mg of the antibody as determined by the LAL method.

### Applications

### Recommended Dilution

<b>FCM</b>	2 $\mu\text{g/mL}$ ( $0.5 \times 10^6$ - $1 \times 10^6$ cells)
------------	---

### Data



Human peripheral blood lymphocytes were stained with 0.2  $\mu\text{g}$  AF/LE Purified Anti-Human CD20 Antibody[2H7] (Right) and 0.2  $\mu\text{g}$  Mouse IgG2b,  $\kappa$  Isotype Control (Left), followed

by Elab Fluor® 647-conjugated Goat Anti-Mouse IgG Secondary Antibody, then anti-Human CD19 FITC-conjugated Monoclonal Antibody.

### Preparation & Storage

**Storage** Store at 4°C valid for 12 months or -20°C valid for long term storage, avoid freeze / thaw cycles. This preparation contains no preservatives, thus it should be handled under aseptic conditions.

**Shipping** Ice bag

### Background

CD20 is a 33-37 kD, four transmembrane spanning protein, also known as B1 and Bp35. CD20 is expressed on pre-B-cells, resting and activated B cells (not plasma cells), some follicular dendritic cells, and at low levels on a T cell subset. CD20 is heavily phosphorylated on activated B cells and malignant B cells. Homo-oligomeric complexes of CD20 are thought to form  $\text{Ca}^{2+}$  conductive ion channels in the plasma membrane of B cells. The CD20 molecule is involved in B-cell activation and is associated with various Src family kinases (Lyn, Lck, Fyn). It exists in a complex with MHC class I and II, CD53, CD81, and CD82.