

RBM14 Polyclonal Antibody

Catalog Number: E-AB-90590

Note: Centrifuge before opening to ensure complete recovery of vial contents.

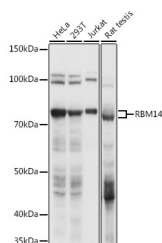
Description

Reactivity	Human, Mouse, Rat
Immunogen	Recombinant fusion protein of human RBM14
Host	Rabbit
Isotype	IgG
Purification	Affinity purification
Conjugation	Unconjugated
Formulation	PBS with 0.01% thiomersal, 50% glycerol, pH7.3.

Applications Recommended Dilution

WB	1:500-1:2000
IF	1:50-1:200

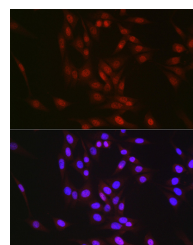
Data



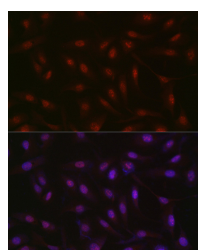
Western blot analysis of extracts of various cell lines using RBM14 Polyclonal Antibody at 1:1000 dilution.

Observed Mw: 75KDa
Calculated

Mw: 12kDa/13kDa/17kDa/37kDa/69kDa



Immunofluorescence analysis of NIH/3T3 cells using RBM14 Polyclonal Antibody at dilution of 1:300 (40x lens). Blue: DAPI for nuclear staining.



Immunofluorescence analysis of U2OS cells using RBM14 Polyclonal Antibody at dilution of 1:300 (40x lens). Blue: DAPI for nuclear staining.

Preparation & Storage

Storage Store at -20°C. Avoid freeze/thaw cycles.

Background

This gene encodes a ribonucleoprotein that functions as a general nuclear coactivator, and an RNA splicing modulator.

For Research Use Only

A Reliable Research Partner in Life Science and Medicine

Toll-free: 1-888-852-8623

Web: www.elabscience.com

Tel: 1-832-243-6086

Email: techsupport@elabscience.com

Fax: 1-832-243-6017

RBM14 Polyclonal Antibody

Catalog Number: E-AB-90590



This protein contains two RNA recognition motifs (RRM) at the N-terminus, and multiple hexapeptide repeat domain at the C-terminus that interacts with thyroid hormone receptor-binding protein (TRBP), and is required for transcription activation. Alternatively spliced transcript variants encoding different isoforms (with opposing effects on transcription) have been described for this gene.

For Research Use Only

A Reliable Research Partner in Life Science and Medicine

Toll-free: 1-888-852-8623

Tel: 1-832-243-6086

Fax: 1-832-243-6017

Web: www.elabscience.com

Email: techsupport@elabscience.com