

Recombinant Rat LIFR/CD118 Protein (His Tag)

Catalog Number: PKSR030233

Note: Centrifuge before opening to ensure complete recovery of vial contents.

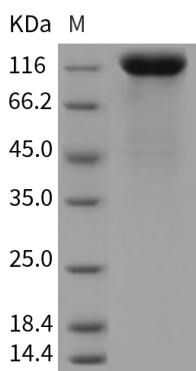
Description

Species	Rat
Source	HEK293 Cells-derived Rat LIFR/CD118 protein Met1-Ser829, with an C-terminal His
Calculated MW	90.0 kDa
Observed MW	116 kDa
Accession	G3V7K2
Bio-activity	1. Measured by its ability to bind mouse LIF-Fc in a functional ELISA. 2. Measured by its ability to inhibit the recombinant human LIF mediated inhibition in the M1 mouse myeloid leukemia cells. The ED ₅₀ for this effect is typically 8-40 ng/mL in the presence of 2 ng/mL recombinant human LIF.

Properties

Purity	> 95 % as determined by reducing SDS-PAGE.
Endotoxin	< 1.0 EU per µg of the protein as determined by the LAL method.
Storage	Generally, lyophilized proteins are stable for up to 12 months when stored at -20 to -80 °C. Reconstituted protein solution can be stored at 4-8°C for 2-7 days. Aliquots of reconstituted samples are stable at < -20°C for 3 months.
Shipping	This product is provided as lyophilized powder which is shipped with ice packs.
Formulation	Lyophilized from sterile PBS, pH 7.4 Normally 5% - 8% trehalose, mannitol and 0.01% Tween 80 are added as protectants before lyophilization.
Reconstitution	Please refer to the specific buffer information in the printed manual. Please refer to the printed manual for detailed information.

Data



> 95 % as determined by reducing SDS-PAGE.

Background

For Research Use Only

Toll-free: 1-888-852-8623
Web: www.elabscience.com

Tel: 1-832-243-6086
Email: techsupport@elabscience.com

Fax: 1-832-243-6017

LIFR (leukemia inhibitory factor receptor) belongs to the family of cytokine receptors. LIFR forms a high-affinity receptor complex with gp130, which mediates the activity of LIF (leukemia inhibitory factor) and thus affects the differentiation, proliferation, and survival of a wide variety of cells in the adult and the embryo. Besides LIF, LIFR can also bind to and activate CNTF (ciliary neurotrophic factor) and CLC (cardiotrophin like cytokine). Evidence showed that in the retina, LIFR activating LIF, CT-1 and cardiotrophin like cytokine (CLC) are strongly upregulated in response to preconditioning with bright cyclic light leading to robust activation of signal transducer and activator of transcription-3 (STAT3) in a time-dependent manner. Further, blocking LIFR activation during preconditioning using a LIFR antagonist (LIF05) attenuated the induced STAT3 activation and also resulted in reduced preconditioning-induced protection of the retinal photoreceptors. These data demonstrate that LIFR and its ligands play an essential role in endogenous neuroprotective mechanisms triggered by preconditioning-induced stress. LIFR was newly found to be a suppressor of hepatocellular carcinoma (HCC), one of the world's top five causes of cancer-related deaths.