

Recombinant Human GALM Protein (His Tag)

Catalog Number:PKSH032469



Note: Centrifuge before opening to ensure complete recovery of vial contents.

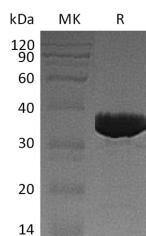
Description

Synonyms	Aldose 1-Epimerase;Galactose Mutarotase;GALM
Species	Human
Expression Host	E.coli
Sequence	Ala2-Ala342
Accession	Q96C23
Calculated Molecular Weight	38.8 kDa
Observed molecular weight	34 kDa
Tag	C-His

Properties

Purity	> 95 % as determined by reducing SDS-PAGE.
Endotoxin	< 1.0 EU per µg of the protein as determined by the LAL method.
Storage	Store at < -20°C, stable for 6 months. Please minimize freeze-thaw cycles.
Shipping	This product is provided as liquid. It is shipped at frozen temperature with blue ice/gel packs. Upon receipt, store it immediately at < - 20°C.
Formulation	Supplied as a 0.2 µm filtered solution of PBS, pH7.4.
Reconstitution	Not Applicable

Data



> 95 % as determined by reducing SDS-PAGE.

Background

Galactose Mutarotase (GALM) is a cytoplasmic enzyme that belongs to the Aldose Epimerase family. GALM is a Mutarotase that converts α -Aldose to the β -Anomer. GALM is active on D-Glucose, L-Arabinose, D-Xylose, D-Galactose, Maltose and Lactose. GALM may be required for normal Galactose metabolism by maintaining the equilibrium of α - and β - anomers of Galactose.

For Research Use Only

A Reliable Research Partner in Life Science and Medicine

Toll-free: 1-888-852-8623

Web: www.elabscience.com

Tel: 1-832-243-6086

Email: techsupport@elabscience.com

Fax: 1-832-243-6017