

Recombinant Human PSMA Protein (His Tag)

Catalog Number: PKSH033667

Note: Centrifuge before opening to ensure complete recovery of vial contents.

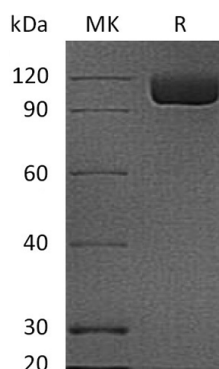
Description

Species	Human
Mol_Mass	80.6 kDa
Accession	Q04609
Bio-activity	Not validated for activity

Properties

Purity	> 95 % as determined by reducing SDS-PAGE.
Endotoxin	< 1.0 EU per µg of the protein as determined by the LAL method.
Storage	Store at < -20°C, stable for 6 months. Please minimize freeze-thaw cycles.
Shipping	This product is provided as liquid. It is shipped at frozen temperature with blue ice/gel packs. Upon receipt, store it immediately at < -20°C.
Formulation	Supplied as a 0.2 µm filtered solution of 20mM MES, 150mM NaCl, 5% Trehalose, pH 5.5.
Reconstitution	Not Applicable

Data



> 95 % as determined by reducing SDS-PAGE.

Background

Glutamate carboxypeptidase 2, also known as FOLH1, PSMA, belongs to the M28B subfamily and the peptidase M28 family. It is highly expressed in prostate epithelium and can be detected in urinary bladder, kidney, testis, ovary, fallopian tube, breast, adrenal gland, liver, esophagus, stomach, small intestine, colon and brain (at protein level). PSMA is used as a diagnostic and prognostic indicator of prostate cancer, and as a possible marker for various neurological disorders such as schizophrenia, Alzheimer disease and Huntington disease. It has both folate hydrolase and N-acetylated- α -linked-acidic dipeptidase (NAALADase) activity and has a preference for tri- α -glutamate peptides. PSMA involves in prostate tumor progression and also exhibits a dipeptidyl-peptidase IV type activity. In vitro, PSMA cleaves Gly-Pro-AMC. PSMA is stable at pH greater than 6.5.

For Research Use Only