

Recombinant Human Arylsulfatase A/ARSA Protein (His Tag)

Catalog Number: PKSH032093

Note: Centrifuge before opening to ensure complete recovery of vial contents.

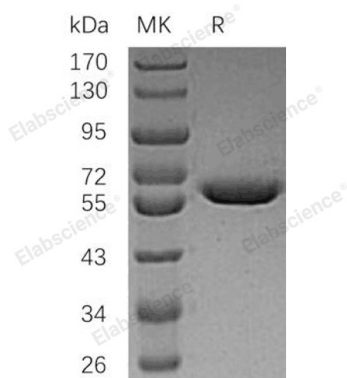
Description

Species	Human
Source	HEK293 Cells-derived Human Arylsulfatase A;ARSA protein Arg19-Ala507, with an C-terminal His
Calculated MW	52.9 kDa
Observed MW	50-65 kDa
Accession	AAH14210.2
Bio-activity	Not validated for activity

Properties

Purity	> 95 % as determined by reducing SDS-PAGE.
Concentration	Subject to label value.
Endotoxin	< 1.0 EU per µg of the protein as determined by the LAL method.
Storage	Store at < -20°C, stable for 6 months. Please minimize freeze-thaw cycles.
Shipping	This product is provided as liquid. It is shipped at frozen temperature with blue ice/gel packs. Upon receipt, store it immediately at < - 20°C.
Formulation	Supplied as a 0.2 µm filtered solution of 20mM Tris-HCl, 300mM NaCl, pH 8.0.

Data



> 95 % as determined by reducing SDS-PAGE.

Background

Arylsulfatase A (ARSA) is a lysosomal enzyme that breaks down Cerebroside 3-Sulfate, a major constituent of the myelin sheet, into Cerebroside and Sulfate. The ARSA deficiency results in Metachromatic Leukodystrophy (MLD), a lysosomal storage disease in the central and peripheral nervous systems with severe and progressive neurological symptoms. Recombinant Human ARSA corresponds to the ARSA mature peptide and has sulfatase activity.