

Recombinant Human LILRB1 Protein (His Tag)

Catalog Number: PDMH100363

Note: Centrifuge before opening to ensure complete recovery of vial contents.

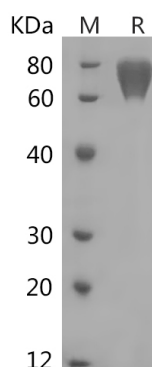
Description

Species	Human
Source	HEK293 Cells-derived Human LILRB1 protein Gly24-His458, with an C-terminal His
Calculated MW	48.2 kDa
Observed MW	79 kDa
Accession	D9IDM8
Bio-activity	Not validated for activity

Properties

Purity	> 95% as determined by reducing SDS-PAGE.
Endotoxin	< 1.0 EU/mg of the protein as determined by the LAL method
Storage	Generally, lyophilized proteins are stable for up to 12 months when stored at -20 to -80 °C. Reconstituted protein solution can be stored at 4-8°C for 2-7 days. Aliquots of reconstituted samples are stable at < -20°C for 3 months.
Shipping	This product is provided as lyophilized powder which is shipped with ice packs.
Formulation	Lyophilized from a 0.2 µm filtered solution in PBS with 5% Trehalose and 5% Mannitol.
Reconstitution	It is recommended that sterile water be added to the vial to prepare a stock solution of 0.5 mg/mL. Concentration is measured by UV-Vis.

Data



> 95 % as determined by reducing SDS-PAGE.

Background

The immunoglobulin-like transcript (ILT) family (also named leukocyte Ig-like receptors (LIR) and monocyte/macrophage Ig-like receptors (MIR)) can be activating and inhibitory immunoreceptors. ILTs are expressed on many leukocyte subsets and regulators of immune responses. ILTs share significant homology with killer cell Ig-like receptors (KIR). Except ILT-6, all ILT family members are type I transmembrane proteins having two or four extracellular Ig-like domains. ILT2 is expressed on most monocytes, dendritic cells, and mature B cells. ILT2 is also expressed on small percentages of T-cells and NK cells. ILT2 can prevent cellular activation.

For Research Use Only

Toll-free: 1-888-852-8623
Web: www.elabscience.com

Tel: 1-832-243-6086
Email: techsupport@elabscience.com

Fax: 1-832-243-6017