

## Elab Fluor® 700 Anti-Mouse CD38 Antibody[NIMR5]

Catalog Number: E-AB-F1193M1

Note: Centrifuge before opening to ensure complete recovery of vial contents.

### Description

<b>Reactivity</b>	Mouse
<b>Host</b>	Rat
<b>Isotype</b>	Rat IgG2a, κ
<b>Clone No.</b>	NIMR5
<b>Isotype Control</b>	Elab Fluor® 700 Rat IgG2a, κ Isotype Control[2A3] [Product E-AB-F09832M1]
<b>Conjugation</b>	Elab Fluor® 700
<b>Conjugation Information</b>	Elab Fluor® 700 is designed to be excited by the Red laser (627-640 nm) and detected using an optical filter centered near 719 nm (e.g., a 725/40 nm bandpass filter).
<b>Storage Buffer</b>	Phosphate buffered solution, pH 7.2, containing 0.09% sodium azide and 1% BSA.

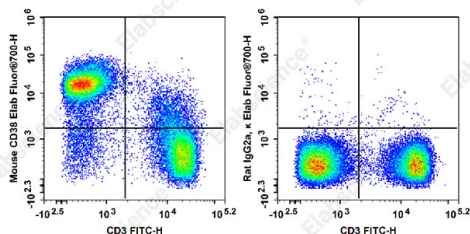
### Applications

### Recommended usage

#### FCM

Each lot of this antibody is quality control tested by flow cytometric analysis. **The amount of the reagent is suggested to be used 5 μL of antibody per test (million cells in 100 μL staining volume or per 100 μL of whole blood).** Please check your vial before the experiment. Since applications vary, the appropriate dilutions must be determined for individual use.

### Data



Staining of C57BL/6 murine splenocytes with FITC Anti-Mouse CD3 Antibody[17A2] and Elab Fluor® 700 Anti-Mouse CD38 Antibody[NIMR5](left) or Elab Fluor® 700 Rat IgG2a, κ Isotype Control(right). Total viable cells were used for analysis.

### Preparation & Storage

<b>Storage</b>	Keep as concentrated solution. This product can be stored at 2-8°C for 12 months. Please protected from prolonged exposure to light and do not freeze.
<b>Shipping</b>	Ice bag

### Antigen Information

<b>Alternate Names</b>	2'-phospho-cyclic-ADP-ribose transferase;ADP-ribosyl cyclase 1;ADPRC 1;CD38;NIM-R5 antigen
<b>Uniprot ID</b>	P56528

### For Research Use Only

**Gene ID**

12494

**Background**

CD38 is a 42 kD glycoprotein, also known as T10. It is an ADP-ribosyl hydrolase, expressed on B cells, NK cells, a subset of T cells, brain, muscle, and kidney. In mouse, CD38 expression is downregulated on germinal center B cells and plasma cells, whereas this is not the case for humans. By functioning as both a cyclase and a hydrolase, CD38 mediates lymphocyte activation, as well as adhesion and metabolism of cADPR and NAADP. CD31 is the ligand of CD38.