

Recombinant Human CLDN11/Claudin-11 Protein (Fc Tag)



Catalog Number: PKSH030768

Note: Centrifuge before opening to ensure complete recovery of vial contents.

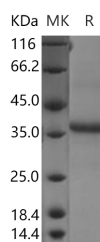
Description

Synonyms	OSP;OTM
Species	Human
Expression Host	HEK293 Cells
Sequence	Val23-Arg82
Accession	O75508
Calculated Molecular Weight	33.2 kDa
Observed molecular weight	37 kDa
Tag	N-mFc

Properties

Purity	> 90 % as determined by reducing SDS-PAGE.
Endotoxin	< 1.0 EU per µg of the protein as determined by the LAL method.
Storage	Generally, lyophilized proteins are stable for up to 12 months when stored at -20 to -80°C. Reconstituted protein solution can be stored at 4-8°C for 2-7 days. Aliquots of reconstituted samples are stable at < -20°C for 3 months.
Shipping	This product is provided as lyophilized powder which is shipped with ice packs.
Formulation	Lyophilized from sterile PBS, pH 7.4 Normally 5 % - 8 % trehalose, mannitol and 0.01 % Tween80 are added as protectants before lyophilization. Please refer to the specific buffer information in the printed manual.
Reconstitution	Please refer to the printed manual for detailed information.

Data



> 90 % as determined by reducing SDS-PAGE.

Background

Claudin-11, also known as CLDN11, belongs to the group of claudins. Claudins are integral membrane proteins and components of tight junction strands. Tight junction strands function as a physical barrier to prevent solutes and water from passing freely through the paracellular space between epithelial or endothelial cell sheets, and also play critical roles in maintaining cell polarity and signal transductions. Claudin-11 is a tight junction associated protein and is a major component of central nervous system (CNS) myelin that is necessary for normal CNS function. Human blood-testis barrier disruption is related to a dysfunction of CLDN11 gene. It plays an important role in regulating proliferation and migration of oligodendrocytes.

For Research Use Only

A Reliable Research Partner in Life Science and Medicine

Toll-free: 1-888-852-8623

Web: www.elabscience.com

Tel: 1-832-243-6086

Email: techsupport@elabscience.com

Fax: 1-832-243-6017