

IRF6 Monoclonal Antibody

catalog number: AN200157P

Note: *Centrifuge before opening to ensure complete recovery of vial contents.*

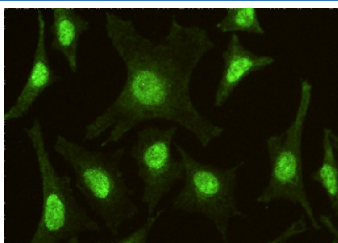
Description

Reactivity	Human
Immunogen	A synthetic peptide corresponding to the C-terminus of the human IRF6
Host	Mouse
Isotype	IgG3
Clone	2B12
Purification	Protein A
Buffer	0.2 µm filtered solution in PBS

Applications Recommended Dilution

ICC/IF	1:20-1:100
---------------	------------

Data



Immunofluorescence analysis of Human IRF6 in Hela cells.

Cells were fixed with 4% PFA, permeabilized with 0.3%

Triton X-100 in PBS, blocked with 10% serum, and

incubated with mouse anti-Human IRF6 monoclonal

antibody (1:60) at 4°C overnight. Then cells were stained

with the Alexa Fluor® 488-conjugated Goat Anti-mouse IgG

secondary antibody(green). Positive staining was localized

to cytoplasm and nucleus.

Preparation & Storage

Storage	This antibody can be stored at 2°C-8°C for one month without detectable loss of activity. Antibody products are stable for twelve months from date of receipt when stored at -20°C to -80°C. Preservative-Free. Avoid repeated freeze-thaw cycles.
Shipping	Ice bag

Background

This gene encodes a member of the interferon regulatory transcription factor (IRF) family. Family members share a highly-conserved N-terminal helix-turn-helix DNA-binding domain and a less conserved C-terminal protein-binding domain. The encoded protein may be a transcriptional activator. Mutations in this gene can cause van der Woude syndrome and popliteal pterygium syndrome. Mutations in this gene are also associated with non-syndromic orofacial cleft type 6. Alternate splicing results in multiple transcript variants.

For Research Use Only