

## INO80 Polyclonal Antibody

**catalog number: E-AB-18113**

**Note:** Centrifuge before opening to ensure complete recovery of vial contents.

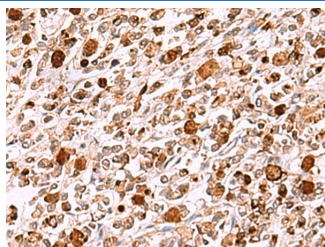
### Description

<b>Reactivity</b>	Human;Mouse
<b>Immunogen</b>	Synthetic peptide of human INO80
<b>Host</b>	Rabbit
<b>Isotype</b>	IgG
<b>Purification</b>	Antigen affinity purification
<b>Buffer</b>	Phosphate buffered solution, pH 7.4, containing 0.05% stabilizer and 50% glycerol.

### Applications Recommended Dilution

<b>IHC</b>	1:50-1:300
------------	------------

### Data



Immunohistochemistry of paraffin-embedded Human gastric cancer tissue using INO80 Polyclonal Antibody at dilution of 1:85(×200)

### Preparation & Storage

<b>Storage</b>	Store at -20°C Valid for 12 months. Avoid freeze / thaw cycles.
<b>Shipping</b>	The product is shipped with ice pack, upon receipt, store it immediately at the temperature recommended.

### Background

This gene encodes a subunit of the chromatin remodeling complex, which is classified into subfamilies depending on sequence features apart from the conserved ATPase domain. This protein is the catalytic ATPase subunit of the INO80 chromatin remodeling complex, which is characterized by a DNA-binding domain. This protein is proposed to bind DNA and be recruited by the YY1 transcription factor to activate certain genes. Alternative splicing results in multiple transcript variants.

### For Research Use Only