

# EIF2 alpha Polyclonal Antibody

catalog number: E-AB-31295

**Note:** Centrifuge before opening to ensure complete recovery of vial contents.

## Description

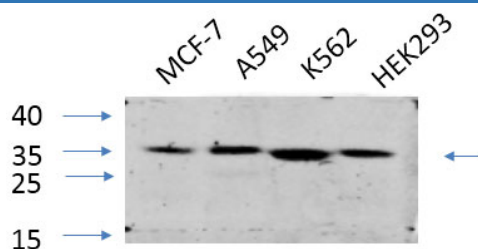
<b>Reactivity</b>	Human;Mouse;Rat;Monkey
<b>Immunogen</b>	Synthesized peptide derived from human eIF2 $\alpha$ around the non-phosphorylation site of Ser51.
<b>Host</b>	Rabbit
<b>Isotype</b>	IgG
<b>Purification</b>	Affinity purification
<b>Conjugation</b>	Unconjugated
<b>buffer</b>	Phosphate buffered solution, pH 7.4, containing 0.05% stabilizer, 0.5% protein protectant and 50% glycerol.

## Applications

## Recommended Dilution

<b>WB</b>	1:500-1:2000
<b>IHC</b>	1:100-1:300
<b>IF</b>	1:50-1:200

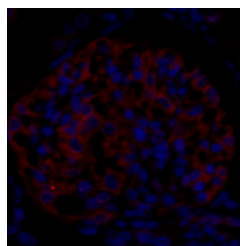
## Data



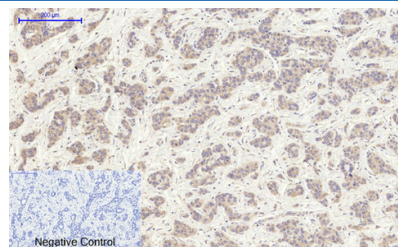
Western Blot analysis of various cells using EIF2 alpha Polyclonal Antibody at dilution of 1:1000.

**Observed-MV:38 kDa**

**Calculated-MV:36 kDa**



Immunofluorescence analysis of Rat kidney tissue using EIF2 alpha Polyclonal Antibody at dilution of 1:200.



Immunohistochemistry of paraffin-embedded Human liver cancer tissue using EIF2 alpha Polyclonal Antibody at dilution of 1:200.

## Preparation & Storage

<b>Storage</b>	Store at -20°C Valid for 12 months. Avoid freeze / thaw cycles.
<b>Shipping</b>	The product is shipped with ice pack, upon receipt, store it immediately at the temperature recommended.

## Background

## For Research Use Only

# EIF2 alpha Polyclonal Antibody

catalog number: E-AB-31295



Functions in the early steps of protein synthesis of a small number of specific mRNAs. Acts by directing the binding of methionyl-tRNA<sub>i</sub> to 40S ribosomal subunits. In contrast to the eIF-2 complex, it binds methionyl-tRNA<sub>i</sub> to 40 S subunits in a codon-dependent manner, whereas the eIF-2 complex binds methionyl-tRNA<sub>i</sub> to 40 S subunits in a GTP-dependent manner. May act by impinging the expression of specific proteins.

## For Research Use Only

A Reliable Research Partner in Life Science and Medicine  
Tel: 400-999-2100

Email: [techsupport@elabscience.cn](mailto:techsupport@elabscience.cn)

Web: [www.elabscience.cn](http://www.elabscience.cn)

Rev. V1.7