

Recombinant Rad21 Monoclonal Antibody

catalog number: **E-AB-81508**

Note: Centrifuge before opening to ensure complete recovery of vial contents.

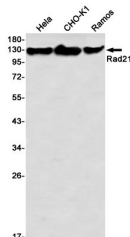
Description

Reactivity	Human;Hamster
Immunogen	A synthetic peptide of human Rad21
Host	Rabbit
Isotype	IgG
Clone	R03-510
Purification	Affinity Purified
Buffer	50mM Tris-Glycine(pH 7.4), 0.15M NaCl, 40% Glycerol, 0.05% stabilizer and 0.05% protective protein.

Applications

Applications	Recommended Dilution
WB	1:500-1:1000
IHC	1:50-1:100

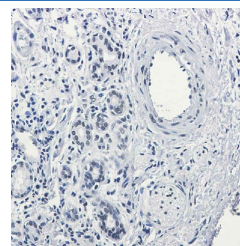
Data



Western blot detection of Rad21 in HeLa,CHO-K1,Ramos using Rad21 Rabbit mAb(1:1000 diluted)

Observed-MW:130 kDa

Calculated-MW:72 kDa



Immunohistochemistry of Rad21 in paraffin-embedded Human lung cancer tissue using Rad21 Rabbit mAb at dilution 1:50

Preparation & Storage

Storage	Store at -20°C Valid for 12 months. Avoid freeze / thaw cycles.
Shipping	The product is shipped with ice pack,upon receipt,store it immediately at the temperature recommended.

Background

RAD21, also named as Nuclear matrix protein 1, is a 631 amino acid protein, which belongs to the rad21 family. The calculated molecular weight of RAD21 is 72 kDa, but the phosphorylated RAD21 is about 120 kDa. The protein encoded by this gene is highly similar to the gene product of Schizosaccharomyces pombe rad21, a gene involved in the repair of DNA double-strand breaks, as well as in chromatid cohesion during mitosis. This protein is a nuclear phospho-protein, which becomes hyperphosphorylated in cell cycle M phase. The highly regulated association of this protein with mitotic chromatin specifically at the centromere region suggests its role in sister chromatid cohesion in mitotic cells

For Research Use Only