

# COPS2 Polyclonal Antibody

Catalog Number:E-AB-61482



**Note:** Centrifuge before opening to ensure complete recovery of vial contents.

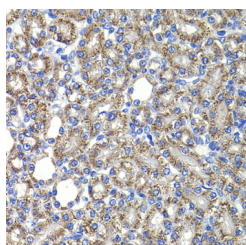
## Description

<b>Reactivity</b>	Human,Mouse,Rat
<b>Immunogen</b>	Recombinant fusion protein of human COPS2 (NP_004227.1).
<b>Host</b>	Rabbit
<b>Isotype</b>	IgG
<b>Purification</b>	Affinity purification
<b>Conjugation</b>	Unconjugated
<b>Formulation</b>	PBS with 0.02% sodium azide, 50% glycerol, pH7.3.

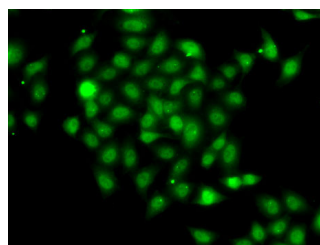
## Applications Recommended Dilution

<b>IHC</b>	1:50-1:200
<b>IF</b>	1:50-1:100

## Data



Immunohistochemistry of paraffin-embedded Rat kidney using COPS2 Polyclonal Antibody at dilution of 1:100 (40x lens).



Immunofluorescence analysis of A-549 cells using COPS2 Polyclonal Antibody

## Preparation & Storage

**Storage** Store at -20°C. Avoid freeze / thaw cycles.

## Background

COPS2 (COP9 Signalosome Subunit 2) is a Protein Coding gene. Diseases associated with COPS2 include Xeroderma Pigmentosum, Complementation Group E and Persistent Hyperplastic Primary Vitreous. Among its related pathways are Clathrin-mediated endocytosis and Transcription-Coupled Nucleotide Excision Repair (TC-NER). Gene Ontology (GO) annotations related to this gene include obsolete signal transducer activity and transcription corepressor activity. An important paralog of this gene is PSMD11.

## For Research Use Only

A Reliable Research Partner in Life Science and Medicine

Toll-free: 1-888-852-8623

Web: [www.elabscience.com](http://www.elabscience.com)

Tel: 1-832-243-6086

Email: [techsupport@elabscience.com](mailto:techsupport@elabscience.com)

Fax: 1-832-243-6017