

Recombinant Cystatin C/CST3 Monoclonal Antibody

catalog number: **AN300336P**

Note: *Centrifuge before opening to ensure complete recovery of vial contents.*

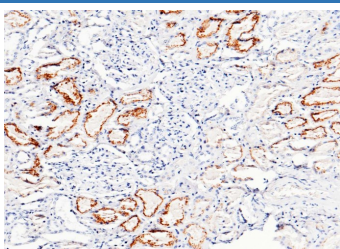
Description

Reactivity	Human
Immunogen	Recombinant Human Cystatin C/CST3 protein
Host	Rabbit
Isotype	IgG
Clone	2C6
Purification	Protein A
Buffer	0.2 µm filtered solution in PBS

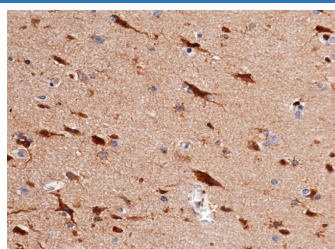
Applications Recommended Dilution

IHC-P	1:100-1:500
ICC/IF	1:20-1:100

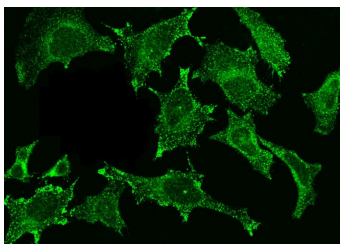
Data



Immunohistochemistry of paraffin-embedded human kidney using Cystatin C/CST3 Monoclonal Antibody at dilution of 1:200.



Immunohistochemistry of paraffin-embedded human brain using Cystatin C/CST3 Monoclonal Antibody at dilution of 1:200.



Immunofluorescence analysis of CST3 in Hela cells. Cells were fixed with 4% PFA, permeabilized with 0.1% Triton X-100 in PBS, blocked with 10% serum, and incubated with rabbit anti-Y CST3 monoclonal antibody (dilution ratio 1:60) at 4°C overnight. Then cells were stained with the Alexa Fluor®488-conjugated Goat Anti-rabbit IgG secondary antibody (green). Positive staining was localized to Cytoplasm.

Preparation & Storage

Storage	This antibody can be stored at 2°C-8°C for one month without detectable loss of activity. Antibody products are stable for twelve months from date of receipt when stored at -20°C to -80°C. Preservative-Free. Avoid repeated freeze-thaw cycles.
Shipping	Ice bag

Background

For Research Use Only

Toll-free: 1-888-852-8623
Web: www.elabscience.com

Tel: 1-832-243-6086
Email: techsupport@elabscience.com

Fax: 1-832-243-6017

Rev. V1.0

Cystatin C is a member of family 2 of the Cystatin superfamily . It is involved in processes such as tumor invasion and metastasis, inflammation and some neurological diseases. It inhibits many cysteine proteases such as papain and cathepsins B, H, K, L, and S.