

## Recombinant Human $\gamma$ -Synuclein/SNCG Protein

**Catalog Number:** PKSH033274

**Note:** Centrifuge before opening to ensure complete recovery of vial contents.

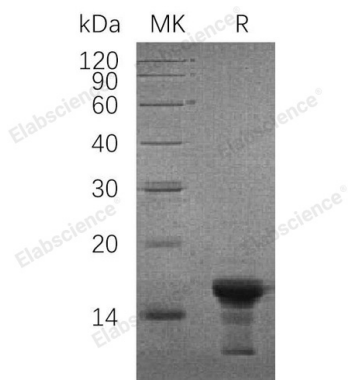
### Description

<b>Species</b>	Human
<b>Source</b>	E.coli-derived Human $\gamma$ -Synuclein/SNCG protein Met 1-Asp127
<b>Calculated MW</b>	13.6 kDa
<b>Observed MW</b>	16-18 kDa
<b>Accession</b>	O76070
<b>Bio-activity</b>	Not validated for activity

### Properties

<b>Purity</b>	> 95 % as determined by reducing SDS-PAGE.
<b>Endotoxin</b>	< 1.0 EU per $\mu$ g of the protein as determined by the LAL method.
<b>Storage</b>	Generally, lyophilized proteins are stable for up to 12 months when stored at -20 to -80 °C. Reconstituted protein solution can be stored at 4-8°C for 2-7 days. Aliquots of reconstituted samples are stable at < -20°C for 3 months.
<b>Shipping</b>	This product is provided as lyophilized powder which is shipped with ice packs.
<b>Formulation</b>	Lyophilized from a 0.2 $\mu$ m filtered solution of PBS, pH 7.4. Normally 5% - 8% trehalose, mannitol and 0.01% Tween 80 are added as protectants before lyophilization.
<b>Reconstitution</b>	Please refer to the specific buffer information in the printed manual. Please refer to the printed manual for detailed information.

### Data



> 95 % as determined by reducing SDS-PAGE.

### Background

Gamma-Synuclein (SNCG) is a member of the Synuclein protein family. Gamma-Synuclein is mostly expressed in the peripheral nervous system and retina. Gamma-Synuclein plays a role in neurofilament network integrity and may be involved in modulating axonal architecture during development and in the adult. In addition, it may also function in modulating the keratin network in skin. SNCG expression in breast tumors has been as a marker for tumor progression. SNCG is also believed to be involved in the pathogenesis of neurodegenerative diseases.

### For Research Use Only

Toll-free: 1-888-852-8623  
Web: [www.elabscience.com](http://www.elabscience.com)

Tel: 1-832-243-6086  
Email: [techsupport@elabscience.com](mailto:techsupport@elabscience.com)

Fax: 1-832-243-6017