

JAM-A Polyclonal Antibody

Catalog Number: E-AB-15145



Note: Centrifuge before opening to ensure complete recovery of vial contents.

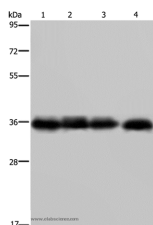
Description

Reactivity	Human
Immunogen	Recombinant protein of human F11R
Host	Rabbit
Isotype	IgG
Purification	Affinity purification
Conjugation	Unconjugated
Formulation	PBS with 0.05% sodium azide and 50% glycerol, PH7.4

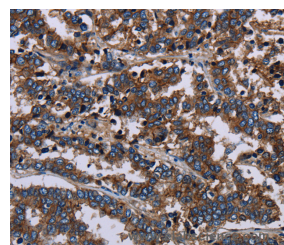
Applications Recommended Dilution

WB	1:500-1:2000
IHC	1:50-1:200

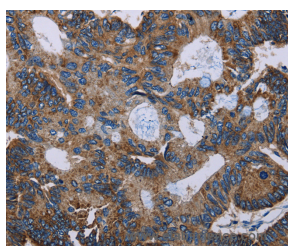
Data



Western Blot analysis of K562 cell and Human kidney cancer tissue, 293T and HepG2 cell using JAM-A Polyclonal Antibody at dilution of 1:600
Calculated Mw:33kDa



Immunohistochemistry of paraffin-embedded Human liver cancer using JAM-A Polyclonal Antibody at dilution of 1:60



Immunohistochemistry of paraffin-embedded Human colon cancer using JAM-A Polyclonal Antibody at dilution of 1:60

Preparation & Storage

Storage Store at -20°C. Avoid freeze / thaw cycles.

Background

Tight junctions represent one mode of cell-to-cell adhesion in epithelial or endothelial cell sheets, forming continuous seals around cells and serving as a physical barrier to prevent solutes and water from passing freely through the paracellular space. The protein encoded by this immunoglobulin superfamily gene member is an important regulator of

For Research Use Only

A Reliable Research Partner in Life Science and Medicine

Toll-free: 1-888-852-8623

Web: www.elabscience.com

Tel: 1-832-243-6086

Email: techsupport@elabscience.com

Fax: 1-832-243-6017

JAM-A Polyclonal Antibody

Catalog Number: E-AB-15145



tight junction assembly in epithelia. In addition, the encoded protein can act as a receptor for reovirus, a ligand for the integrin LFA1, involved in leukocyte transmigration, and a platelet receptor. Multiple 5' alternatively spliced variants, encoding the same protein, have been identified but their biological validity has not been established.

For Research Use Only

A Reliable Research Partner in Life Science and Medicine

Toll-free: 1-888-852-8623

Tel: 1-832-243-6086

Fax: 1-832-243-6017

Web: www.elabscience.com

Email: techsupport@elabscience.com