

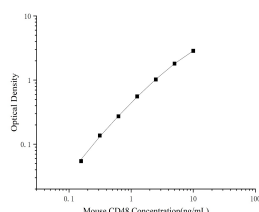
CD48/SLAMF2 Polyclonal Antibody(Capture/Detector)

catalog number: AN004580P

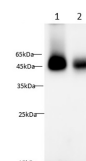
Note: Centrifuge before opening to ensure complete recovery of vial contents.

Description	
Reactivity	Mouse
Immunogen	Recombinant Mouse CD48/SLAMF2 Protein expressed by Mammalian
Host	Rabbit
Isotype	Rabbit IgG
Purification	Antigen Affinity Purification
Conjugation	Unconjugated
Buffer	Phosphate buffered solution, pH 7.2, containing 0.05% proclin 300.
Applications	
ELISA Capture	2-8 µg/mL
ELISA Detector	0.1-0.4 µg/mL
WB	1:500-1:1000

Data



Sandwich ELISA-Recombinant Mouse CD48/SLAMF2 Protein standard curve. Background subtracted standard curve using Anti-CD48/SLAMF2 antibody(AN004580P) (Capture), Anti-CD48/SLAMF2 antibody(AN004580P) (Detector). The reference range value is 0.16~10ng/mL for mouse.



Western Blot with Anti CD48/SLAMF2 Polyclonal antibody at dilution of 1:1000. Lane 1: Mouse spleen tissue lysate, Lane 2: Mouse thymus tissue lysate.

Observed-MW:45-50 kDa

Calculated-MW:28 kDa

Preparation & Storage	
Storage	Store at 4°C valid for 12 months or -20°C valid for long term storage, avoid freeze / thaw cycles.
Shipping	The product is shipped with ice pack, upon receipt, store it immediately at the temperature recommended.

Background

Cluster of Differentiation 48 (CD48), also known as SLAMF2, BCM-1 and BLAST-1, is a GPI-linked protein belonging to the CD2 subfamily of immunoglobulin superfamily molecules. CD2 and 2B4 (CD244) are known ligands for CD48. CD48 protein is expressed on most lineage-committed hematopoietic cells but not on hematopoietic stem cells or multipotent hematopoietic progenitors. CD48 protein performs biological functions in a variety of processes including adhesion, pathogen recognition, cellular activation, and cytokine regulation, and emerges as a critical effector molecule in immune responses.

For Research Use Only