

Recombinant Human CDKL2 Protein (His Tag)

Catalog Number:PKSH030371



Note: Centrifuge before opening to ensure complete recovery of vial contents.

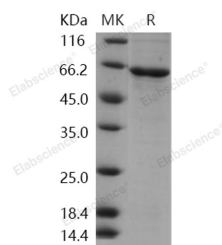
Description

Synonyms	KKIAMRE;P56
Species	Human
Expression Host	Baculovirus-Insect Cells
Sequence	Met 1-His 493
Accession	Q92772
Calculated Molecular Weight	58.3 kDa
Observed molecular weight	63 kDa
Tag	N-His

Properties

Purity	> 80 % as determined by reducing SDS-PAGE.
Endotoxin	< 1.0 EU per µg of the protein as determined by the LAL method.
Storage	Store at < -20°C, stable for 6 months. Please minimize freeze-thaw cycles.
Shipping	This product is provided as liquid. It is shipped at frozen temperature with blue ice/gel packs. Upon receipt, store it immediately at < - 20°C.
Formulation	Supplied as sterile solution of 20mM Tris, 500mM NaCl, pH 7.4, 10% glycerol
Reconstitution	Not Applicable

Data



> 80 % as determined by reducing SDS-PAGE.

Background

Cyclin-dependent kinase-like 2 (Cdkl2) is a member of cdc2-related serine / threonine protein kinase family and it is found expressed in various brain regions, including the cerebral cortex, entorinal cortex, hippocampus, amygdala, and dorsal thalamus. The high expression in these brain regions suggests that Cdkl2 may have functions in cognition and emotion processes. Cdkl2 accumulates primarily in the cytoplasm, with lower levels in the nucleus.

For Research Use Only

A Reliable Research Partner in Life Science and Medicine

Toll-free: 1-888-852-8623

Web: www.elabscience.com

Tel: 1-832-243-6086

Email: techsupport@elabscience.com

Fax: 1-832-243-6017