

## CDKN1A/p21CIP1 Polyclonal Antibody

catalog number: **E-AB-93283**

**Note:** Centrifuge before opening to ensure complete recovery of vial contents.

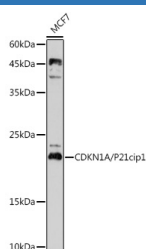
### Description

<b>Reactivity</b>	Human
<b>Immunogen</b>	Recombinant fusion protein of human CDKN1A/p21CIP1
<b>Host</b>	Rabbit
<b>Isotype</b>	IgG
<b>Purification</b>	Affinity purification
<b>Buffer</b>	Phosphate buffered solution, pH 7.4, containing 0.05% stabilizer and 50% glycerol.

### Applications

Applications	Recommended Dilution
<b>WB</b>	1:500-1:2000
<b>IHC</b>	1:50-1:100
<b>IP</b>	1:50-1:200

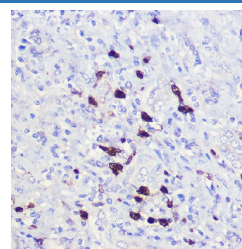
### Data



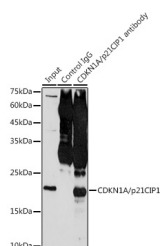
Western blot analysis of extracts of MCF7 cells using CDKN1A/P21cip1 Polyclonal Antibody at 1:1000 dilution.

**Observed-MV: Refer to figures**

**Calculated-MV: 18 kDa**



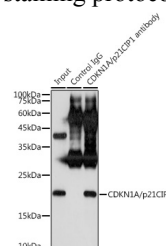
Immunohistochemistry of paraffin-embedded human liver using CDKN1A/p21CIP1 Polyclonal Antibody at dilution of 1:100 (40x lens). Perform high pressure antigen retrieval with 10 mM citrate buffer pH 6.0 before commencing with IHC staining protocol.



Immunoprecipitation analysis of 300ug extracts of MCF7 cells using 3ug CDKN1A/p21CIP1 Polyclonal Antibody. Western blot was performed from the immunoprecipitate using CDKN1A/p21CIP1 Polyclonal Antibody at a dilution of 1:500.

**Observed-MV: Refer to figures**

**Calculated-MV: 18 kDa**



Immunoprecipitation analysis of 300ug extracts of MCF7 cells using 3ug CDKN1A/p21CIP1 Polyclonal Antibody. Western blot was performed from the immunoprecipitate using CDKN1A/p21CIP1 Polyclonal Antibody at a dilution of 1:500.

**Observed-MV: Refer to figures**

**Calculated-MV: 18 kDa**

### Preparation & Storage

**Storage** Store at -20°C Valid for 12 months. Avoid freeze / thaw cycles.

### For Research Use Only

**Shipping**

The product is shipped with ice pack, upon receipt, store it immediately at the temperature recommended.

**Background**

This gene encodes a potent cyclin-dependent kinase inhibitor. The encoded protein binds to and inhibits the activity of cyclin-cyclin-dependent kinase2 or -cyclin-dependent kinase4 complexes, and thus functions as a regulator of cell cycle progression at G1. The expression of this gene is tightly controlled by the tumor suppressor protein p53, through which this protein mediates the p53-dependent cell cycle G1 phase arrest in response to a variety of stress stimuli. This protein can interact with proliferating cell nuclear antigen, a DNA polymerase accessory factor, and plays a regulatory role in S phase DNA replication and DNA damage repair. This protein was reported to be specifically cleaved by CASP3-like caspases, which thus leads to a dramatic activation of cyclin-dependent kinase2, and may be instrumental in the execution of apoptosis following caspase activation. Mice that lack this gene have the ability to regenerate damaged or missing tissue. Multiple alternatively spliced variants have been found for this gene.

**For Research Use Only**