

## LTB4R Polyclonal Antibody

**catalog number: E-AB-66402**

**Note:** Centrifuge before opening to ensure complete recovery of vial contents.

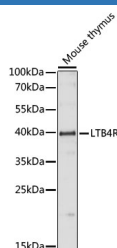
### Description

<b>Reactivity</b>	Mouse
<b>Immunogen</b>	A synthetic peptide of human LTB4R (NP_858043.1).
<b>Host</b>	Rabbit
<b>Isotype</b>	IgG
<b>Purification</b>	Affinity purification
<b>Buffer</b>	Phosphate buffered solution, pH 7.4, containing 0.05% stabilizer and 50% glycerol.

### Applications

<b>WB</b>	1:500-1:2000
-----------	--------------

### Data



Western blot analysis of extracts of Mouse thymus using LTB4R Polyclonal Antibody at dilution of 1:1000.

**Observed-MW:37 kDa**

**Calculated-MW:37 kDa**

### Preparation & Storage

<b>Storage</b>	Store at -20°C Valid for 12 months. Avoid freeze / thaw cycles.
<b>Shipping</b>	The product is shipped with ice pack, upon receipt, store it immediately at the temperature recommended.

### Background

LTB4R (Leukotriene B4 Receptor) is a Protein Coding gene. Diseases associated with LTB4R include Cicatricial Entropion and Spastic Entropion. Among its related pathways are RET signaling and Signaling by GPCR. Gene Ontology (GO) annotations related to this gene include Gprotein-coupled receptor activity and leukotriene receptor activity. An important paralog of this gene is LTB4R2.

### For Research Use Only