

Recombinant Human CD112/Nectin-2 Protein

Catalog Number: PKSH031939

Note: Centrifuge before opening to ensure complete recovery of vial contents.

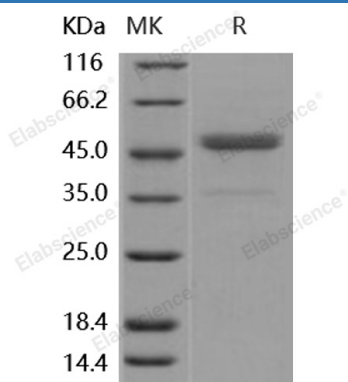
Description

Species	Human
Source	HEK293 Cells-derived Human CD112/Nectin-2 protein Met 1-Leu 360
Calculated MW	36.2 kDa
Observed MW	48 kDa
Accession	NP_002847.1
Bio-activity	Immobilized human CD112 at 10 µg/ml (100 µl/well) can bind human DNAM1-Fch with a linear range of 1. 25-10 µg/ml.

Properties

Purity	> 95 % as determined by reducing SDS-PAGE.
Endotoxin	< 1.0 EU per µg of the protein as determined by the LAL method.
Storage	Generally, lyophilized proteins are stable for up to 12 months when stored at -20 to -80 °C. Reconstituted protein solution can be stored at 4-8°C for 2-7 days. Aliquots of reconstituted samples are stable at < -20°C for 3 months.
Shipping	This product is provided as lyophilized powder which is shipped with ice packs.
Formulation	Lyophilized from sterile 100mM Glycine, 10mM NaCl, 50mM Tris, pH 7.5 Normally 5% - 8% trehalose, mannitol and 0.01% Tween 80 are added as protectants before lyophilization. Please refer to the specific buffer information in the printed manual.
Reconstitution	Please refer to the printed manual for detailed information.

Data



> 95 % as determined by reducing SDS-PAGE.

Background

Cluster of Differentiation 112 (CD112), also known as poliovirus receptor related protein 2 (PVRL2 or PRR2), is a single-pass type I transmembrane glycoprotein belonging to the Immunoglobulin superfamily. CD112 protein also serves as an entry for certain mutant strains of herpes simplex virus and pseudorabies virus, and thus is involved in cell to cell spreading of these viruses. CD112 protein has been identified as the ligand for DNAM-1 (CD226), and the interaction of CD226/CD112 protein can induce NK cell- and CD8+ T cell-mediated cytotoxicity and cytokine secretion. CD112 has been regarded as a critical component in allergic reactions, and accordingly may function as a novel target for anti-allergic therapy.

For Research Use Only