

ACO2 Polyclonal Antibody

catalog number: **E-AB-16130**

Note: Centrifuge before opening to ensure complete recovery of vial contents.

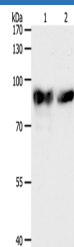
Description

Reactivity	Human;Mouse;Rat
Immunogen	Synthetic peptide of human ACO2
Host	Rabbit
Isotype	IgG
Purification	Affinity purification
Buffer	Phosphate buffered solution, pH 7.4, containing 0.05% stabilizer and 50% glycerol.

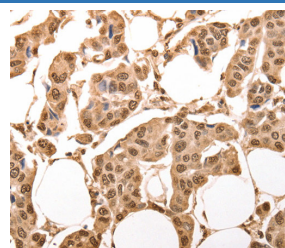
Applications

Applications	Recommended Dilution
WB	1:500-1:2000
IHC	1:50-1:200

Data

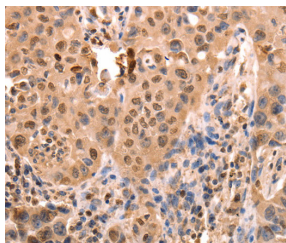


Western Blot analysis of Mouse heart tissue and hela cell using ACO2 Polyclonal Antibody at dilution of 1:400



Immunohistochemistry of paraffin-embedded Human breast cancer using ACO2 Polyclonal Antibody at dilution of 1:30

Calculated-MV:85 kDa



Immunohistochemistry of paraffin-embedded Human lung cancer using ACO2 Polyclonal Antibody at dilution of 1:30

Preparation & Storage

Storage	Store at -20°C Valid for 12 months. Avoid freeze / thaw cycles.
Shipping	The product is shipped with ice pack, upon receipt, store it immediately at the temperature recommended.

Background

The protein encoded by this gene belongs to the aconitase/IPM isomerase family. It is an enzyme that catalyzes the interconversion of citrate to isocitrate via cis-aconitate in the second step of the TCA cycle. This protein is encoded in the nucleus and functions in the mitochondrion. It was found to be one of the mitochondrial matrix proteins that are preferentially degraded by the serine protease 15 (PRSS15), also known as Lon protease, after oxidative modification.

For Research Use Only