

OPG Polyclonal Antibody(Capture/Detector)

catalog number: AN003090P

Note: Centrifuge before opening to ensure complete recovery of vial contents.

Description

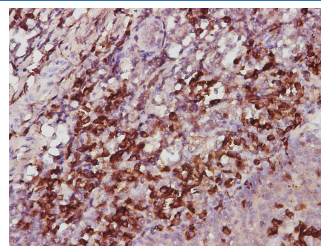
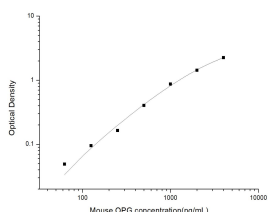
Reactivity	Human;Mouse
Immunogen	Recombinant Mouse OPG Protein expressed by Mammalian
Host	Rabbit
Isotype	Rabbit IgG
Purification	Antigen Affinity Purification
Conjugation	Unconjugated
Buffer	Phosphate buffered solution, pH 7.2, containing 0.05% proclin 300.

Applications

Recommended Dilution

ELISA Capture	2-8 µg/mL
ELISA Detector	0.1-0.4 µg/mL
IHC	1:300-1:600

Data



Sandwich ELISA-Recombinant Mouse OPG Protein standard curve. Background subtracted standard curve using Anti-OPG antibody(AN003090P)(Capture), Anti-OPG antibody(AN003090P)(Detector). The reference range value is 62.5-4000 pg/mL for mouse.

Immunohistochemistry of paraffin-embedded Human tonsil using OPG Polyclonal Antibody at dilution of 1:600.

Preparation & Storage

Storage	Store at 4°C valid for 12 months or -20°C valid for long term storage, avoid freeze / thaw cycles.
Shipping	The product is shipped with ice pack, upon receipt, store it immediately at the temperature recommended.

Background

Osteoprotegerin (OPG)/Osteoclastogenesis Inhibitory Factor (OCIF) is a member of the tumor necrosis factor receptor superfamily that lacks any apparent cell-association motifs and exists as a soluble secreted protein. In the TNF superfamily nomenclature, OPG is referred to as TNFRSF11B. OPG was originally isolated by sequence homology as a TNF receptor family protein during a fetal rat intestine cDNA-sequencing project and subsequently shown to be involved in the regulation of bone density.

For Research Use Only