

Phospho-CHEK2 (Thr68) Polyclonal Antibody

catalog number: E-AB-20843

Note: Centrifuge before opening to ensure complete recovery of vial contents.

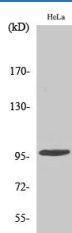
Description

Reactivity	Human;Mouse;Rat
Immunogen	Synthesized peptide derived from human Chk2 around the phosphorylation site of Thr68
Host	Rabbit
Isotype	IgG
Purification	Affinity purification
Buffer	Phosphate buffered solution, pH 7.4, containing 0.05% stabilizer, 0.5% protein protectant and 50% glycerol.

Applications

Applications	Recommended Dilution
WB	1:500-1:2000
IHC	1:100-1:300
IF	1:50-1:200

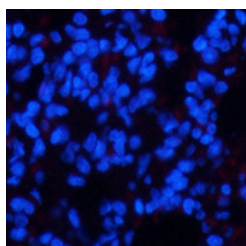
Data



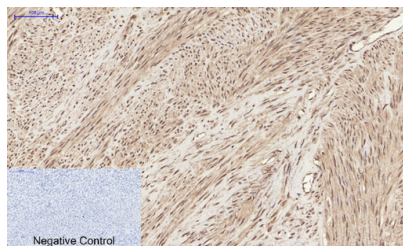
Western Blot analysis of Hela cells using Phospho-CHEK2 (Thr68) Polyclonal Antibody at dilution of 1:500

Observed-MW:61 kDa

Calculated-MW:61 kDa



Immunofluorescence analysis of Rat lung tissue using Phospho-CHEK2 (Thr68) Polyclonal Antibody at dilution of 1:200



Immunohistochemistry of paraffin-embedded Human uterus tissue using Phospho-CHEK2 (Thr68) Polyclonal Antibody at dilution of 1:200

Preparation & Storage

Storage	Store at -20°C Valid for 12 months. Avoid freeze / thaw cycles.
Shipping	The product is shipped with ice pack, upon receipt, store it immediately at the temperature recommended.

Background

For Research Use Only

Regulates cell cycle checkpoints and apoptosis in response to DNA damage, particularly to DNA double-strand breaks. Inhibits CDC25C phosphatase by phosphorylation on 'Ser-216', preventing the entry into mitosis. May also play a role in meiosis. Regulates the TP53 tumor suppressor through phosphorylation at 'Thr-18' and 'Ser-20'.

For Research Use Only

Toll-free: 1-888-852-8623
Web: www.elabscience.com

Tel: 1-832-243-6086
Email: techsupport@elabscience.com

Fax: 1-832-243-6017

Rev. V1.8