

# Recombinant Human Sialidase-1/NEU-1 Protein (His Tag)

Catalog Number: PKSH033056



**Note:** Centrifuge before opening to ensure complete recovery of vial contents.

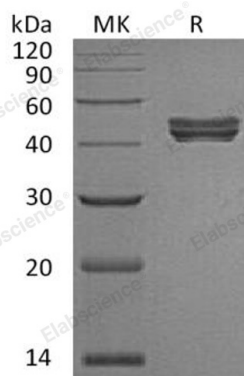
## Description

<b>Species</b>	Human
<b>Mol_Mass</b>	41.3 kDa
<b>Accession</b>	Q99519
<b>Bio-activity</b>	Not validated for activity

## Properties

<b>Purity</b>	> 95 % as determined by reducing SDS-PAGE.
<b>Endotoxin</b>	< 1.0 EU per µg of the protein as determined by the LAL method.
<b>Storage</b>	Store at < -20°C, stable for 6 months. Please minimize freeze-thaw cycles.
<b>Shipping</b>	This product is provided as liquid. It is shipped at frozen temperature with blue ice/gel packs. Upon receipt, store it immediately at < - 20°C.
<b>Formulation</b>	Supplied as a 0.2 µm filtered solution of 20mM PB, 150mM NaCl, 50% Glycerol, pH 7.4.
<b>Reconstitution</b>	Not Applicable

## Data



> 95 % as determined by reducing SDS-PAGE.

## Background

Sialidase-1 belongs to the N-acetyl-a neuraminidase family. Sialidase-1 is expressed in many tissues; it is highly expressed in the pancreas, and weakly expressed in the brain. Sialidase-1 is a lysosomal enzyme, which cleaves terminal sialic acid residues from substrates such as glycoproteins and glycolipids. Deficiencies in the human enzyme Sialidase-1 leads to sialidosis, a rare lysosomal storage disease. Sialidase-1 has been shown to interact with Cathepsin A (protective protein), β-galactosidase and N-acetylgalactosamine-6-sulfate sulfatase in a multienzyme complex.

## For Research Use Only

A Reliable Research Partner in Life Science and Medicine  
Tel:400-999-2100

Email:[techsupport@elabscience.cn](mailto:techsupport@elabscience.cn)

Web:[www.elabscience.cn](http://www.elabscience.cn)

Rev. V3.2