

Recombinant Human LYG2 Protein (His Tag)

Catalog Number:PKSH032723



Note: Centrifuge before opening to ensure complete recovery of vial contents.

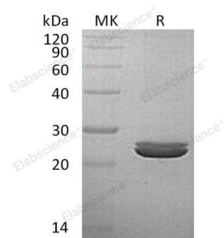
Description

Synonyms	Lysozyme G-Like Protein 2;LYG2;LYGH
Species	Human
Expression Host	HEK293 Cells
Sequence	Ser20-Phe212
Accession	Q86SG7
Calculated Molecular Weight	22.6 kDa
Observed molecular weight	23-27 kDa
Tag	C-His

Properties

Purity	> 95 % as determined by reducing SDS-PAGE.
Endotoxin	< 1.0 EU per µg of the protein as determined by the LAL method.
Storage	Store at < -20°C, stable for 6 months. Please minimize freeze-thaw cycles.
Shipping	This product is provided as liquid. It is shipped at frozen temperature with blue ice/gel packs. Upon receipt, store it immediately at < - 20°C.
Formulation	Supplied as a 0.2 µm filtered solution of 20mM PB, 150mM NaCl, 10% Glycerol, pH 7.2.
Reconstitution	Not Applicable

Data



> 95 % as determined by reducing SDS-PAGE.

Background

Lysozyme G-Like Protein 2 (LYG2) is a secreted protein that belongs to the glycosyl hydrolase 23 family. LYG2 contains one SLT domain, one protein domain present in bacterial lytic transglycosylase (SLT) and in eukaryotic lysozymes (GEWL). SLT domain catalyzes the cleavage of the β -1,4-glycosidic bond between N-acetylmuramic acid (MurNAc) and N-acetylglucosamine (GlcNAc). LYG2 has hydrolase activity which acting on glycosyl bonds, and possess lysozyme activity.

For Research Use Only

A Reliable Research Partner in Life Science and Medicine

Toll-free: 1-888-852-8623

Web: www.elabscience.com

Tel: 1-832-243-6086

Email: techsupport@elabscience.com

Fax: 1-832-243-6017