

Recombinant SARS-CoV-2 3C-like Proteinase Protein (His Tag)

Catalog Number: PKSR030465

Note: Centrifuge before opening to ensure complete recovery of vial contents.

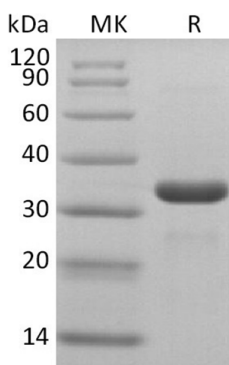
Description

Species	SARS-CoV-2
Source	E.coli-derived SARS-CoV-2 3C-likease protein Ser3264-Gln3569, with an N-terminal His
Calculated MW	36.1 kDa
Observed MW	33 kDa
Accession	P0DTC1
Bio-activity	Not validated for activity

Properties

Purity	> 95 % as determined by reducing SDS-PAGE.
Concentration	Subject to label value.
Endotoxin	< 1.0 EU per µg of the protein as determined by the LAL method.
Storage	Store at < -20°C, stable for 6 months. Please minimize freeze-thaw cycles.
Shipping	This product is provided as liquid. It is shipped at frozen temperature with blue ice/gel packs. Upon receipt, store it immediately at < -20°C.
Formulation	Supplied as a 0.2 µM filtered solution of PBS, 1 mM EDTA, 10% Glycerol, pH 7.4.

Data



> 95 % as determined by reducing SDS-PAGE.

Background

The viral main proteinase (M pro , also called 3CL pro), which controls the activities of the coronavirus replication complex. It functions as a cysteine protease engaging in the proteolytic cleavage of the viral precursor polyprotein to a series of functional proteins required for coronavirus replication and is considered as an appealing target for designing anti-SARS agents.