

Recombinant Rat CCL2 protein (His Tag)

Catalog Number: PDMR100017

Note: Centrifuge before opening to ensure complete recovery of vial contents.

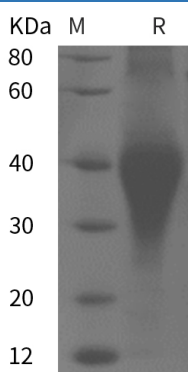
Description

Species	Rat
Source	HEK293 Cells-derived Rat CCL2 protein Met1-Asn148, with an C-terminal His
Calculated MW	13.6 kDa
Observed MW	40 kDa
Accession	P14844
Bio-activity	Not validated for activity

Properties

Purity	> 95% as determined by reducing SDS-PAGE.
Endotoxin	< 1.0 EU/mg of the protein as determined by the LAL method
Storage	Generally, lyophilized proteins are stable for up to 12 months when stored at -20 to -80 °C. Reconstituted protein solution can be stored at 4-8°C for 2-7 days. Aliquots of reconstituted samples are stable at < -20°C for 3 months.
Shipping	This product is provided as lyophilized powder which is shipped with ice packs.
Formulation	Lyophilized from a 0.2 µm filtered solution in PBS with 5% Trehalose and 5% Mannitol.
Reconstitution	It is recommended that sterile water be added to the vial to prepare a stock solution of 0.5 mg/mL. Concentration is measured by UV-Vis.

Data



> 95 % as determined by reducing SDS-PAGE.

Background

The chemokine (C-C motif) ligand 2 (CCL2), also known as monocyte chemoattractant protein (MCP)-1 and small inducible cytokine A2 (SCYA2)), is a small cytokine that belongs to the CC chemokine family responsible for monocyte attraction. Its cognate receptor, CCR2, play a critical role in regulating nociceptive processes during neuropathic pain. Both CCL2 and CCR2 are implicated in induction of autoimmunity. CCL2 recruits monocytes, memory T cells, and dendritic cells to the sites of inflammation produced by either tissue injury or infection. Recently research also showed that CCL2 might be useful as a biomarker of fibrosis as well as a target for therapeutic intervention.

For Research Use Only

Toll-free: 1-888-852-8623
Web: www.elabscience.com

Tel: 1-832-243-6086
Email: techsupport@elabscience.com

Fax: 1-832-243-6017