

Recombinant Chromogranin A Monoclonal Antibody

catalog number: **AN300989L**

Note: Centrifuge before opening to ensure complete recovery of vial contents.

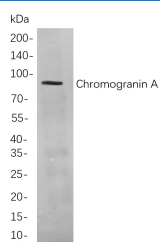
Description

Reactivity	Human;Mouse;Rat
Immunogen	Recombinant Human Chromogranin A protein
Host	Rabbit
Isotype	IgG, κ
Clone	B740
Purification	Protein A
Buffer	PBS, 50% glycerol, 0.05% Proclin 300, 0.05% protein protectant.

Applications Recommended Dilution

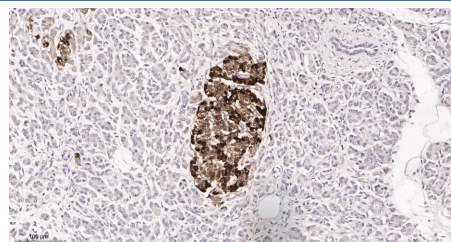
IHC	1:200-1:1000
WB	1:1000-1:5000
IF	1:200-1:1000
ELISA	1:5000-1:20000
IP	1:50-1:200,

Data

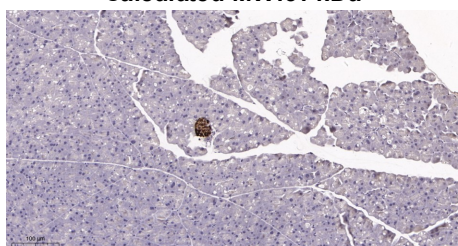


Western Blot with Recombinant Chromogranin A Monoclonal Antibody at dilution of 1:1000 dilution. Lane A: SH-SY5Y cells.

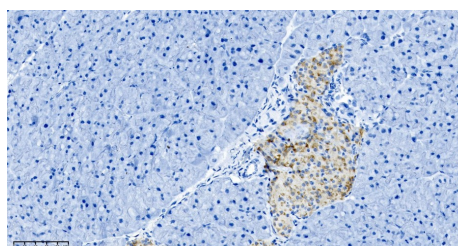
Observed-MW:80 kDa
Calculated-MW:51 kDa



Immunohistochemistry of paraffin-embedded human pancreas tissue using Recombinant Chromogranin A Monoclonal Antibody at dilution of 1:200.



Immunohistochemistry of paraffin-embedded mouse pancreas tissue using Recombinant Chromogranin A Monoclonal Antibody at dilution of 1:200.



Immunohistochemistry of paraffin-embedded mouse pancreas using Recombinant Chromogranin A Monoclonal Antibody at dilution of 1:200.

Preparation & Storage

Storage	Store at -20°C Valid for 12 months. Avoid freeze / thaw cycles.
Shipping	Ice bag

Background

For Research Use Only

Toll-free: 1-888-852-8623
Web: www.elabscience.com

Tel: 1-832-243-6086
Email: techsupport@elabscience.com

Fax: 1-832-243-6017

Rev. V1.2

The protein encoded by this gene is a member of the chromogranin/secretogranin family of neuroendocrine secretory proteins. It is found in secretory vesicles of neurons and endocrine cells. This gene product is a precursor to three biologically active peptides; vasostatin, pancreastatin, and parastatin. These peptides act as autocrine or paracrine negative modulators of the neuroendocrine system. Two other peptides, catestatin and chromofungin, have antimicrobial activity and antifungal activity, respectively. Two transcript variants encoding different isoforms have been found for this gene.