

Recombinant Human ATG5 Protein

Catalog Number:PKSH032101



Note: Centrifuge before opening to ensure complete recovery of vial contents.

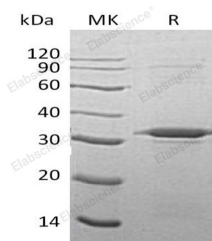
Description

Synonyms	Autophagy protein 5;APG5-like;Apoptosis-specific protein;APG5L;ASP;ATG5;
Species	Human
Expression Host	E.coli
Sequence	Met 1-Asp275
Accession	Q9H1Y0
Calculated Molecular Weight	32.4 kDa
Observed molecular weight	33 kDa
Tag	None

Properties

Purity	> 90 % as determined by reducing SDS-PAGE.
Endotoxin	< 1.0 EU per µg of the protein as determined by the LAL method.
Storage	Store at < -20°C, stable for 6 months. Please minimize freeze-thaw cycles.
Shipping	This product is provided as liquid. It is shipped at frozen temperature with blue ice/gel packs. Upon receipt, store it immediately at < - 20°C.
Formulation	Supplied as a 0.2 µm filtered solution of 20mM Tris-HCl, 0.2M NaCl, 1mM DTT, 40% Glycerol, pH 8.0.
Reconstitution	Not Applicable

Data



> 90 % as determined by reducing SDS-PAGE.

Background

ATG5 is an E2 ubiquitin ligase which is necessary for autophagy. Its expression is a relatively late event in the apoptotic process, occurring downstream of caspase activity, dramatically highly expressed in apoptotic cells. It is activated by ATG7, conjugates to ATG12 and associates with isolation membrane to form cup-shaped isolation membrane and autophagosome. The conjugate complex detaches from the membrane immediately before or after autophagosome formation is completed. ATG5 plays an important role in the apoptotic process, possibly within the modified cytoskeleton.

For Research Use Only

A Reliable Research Partner in Life Science and Medicine

Toll-free: 1-888-852-8623

Web: www.elabscience.com

Tel: 1-832-243-6086

Email: techsupport@elabscience.com

Fax: 1-832-243-6017