

Recombinant Human SULT1C2 Protein (His Tag)

Catalog Number:PKSH033086



Note: Centrifuge before opening to ensure complete recovery of vial contents.

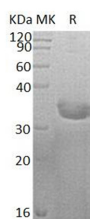
Description

Synonyms	Sulfotransferase 1C2;ST1C2;Sulfotransferase 1C1;SULT1C#1;humSULTC2;SULT1C2;SULT1C1;
Species	Human
Expression Host	E.coli
Sequence	Met 1-Leu296
Accession	O00338
Calculated Molecular Weight	36.3 kDa
Observed molecular weight	30-37 kDa
Tag	N-His

Properties

Purity	> 95 % as determined by reducing SDS-PAGE.
Endotoxin	< 1.0 EU per µg of the protein as determined by the LAL method.
Storage	Store at < -20°C, stable for 6 months. Please minimize freeze-thaw cycles.
Shipping	This product is provided as liquid. It is shipped at frozen temperature with blue ice/gel packs. Upon receipt, store it immediately at < - 20°C.
Formulation	Supplied as a 0.2 µm filtered solution of 20mM Tris-HCl, 100mM NaCl, pH 8.5.
Reconstitution	Not Applicable

Data



> 95 % as determined by reducing SDS-PAGE.

Background

Sulfotransferase 1C2 (SULT1C2) is a cytosolic enzyme member of the Sulfotransferase 1 family. Human SULT1C2 is primarily expressed in the adult stomach, kidney and thyroid gland, and in the fetal kidney and liver. SULT1C2 catalyzes the sulfate conjugation of drugs, xenobiotic compounds, hormones, and neurotransmitters. SULT1C2 may be involved in the activation of carcinogenic hydroxylamines. It shows activity towards p-nitrophenol and N-hydroxy-2-acetylaminofluorene (N-OH-2AAF).

For Research Use Only

A Reliable Research Partner in Life Science and Medicine

Toll-free: 1-888-852-8623

Web: www.elabscience.com

Tel: 1-832-243-6086

Email: techsupport@elabscience.com

Fax: 1-832-243-6017