

## Recombinant CD200 Monoclonal Antibody

**catalog number: AN300209P**

**Note:** Centrifuge before opening to ensure complete recovery of vial contents.

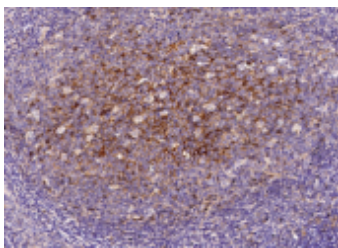
### Description

<b>Reactivity</b>	Human
<b>Immunogen</b>	Recombinant Human CD200 protein
<b>Host</b>	Rabbit
<b>Isotype</b>	IgG
<b>Clone</b>	9C4
<b>Purification</b>	Protein A
<b>Buffer</b>	0.2 µm filtered solution in PBS

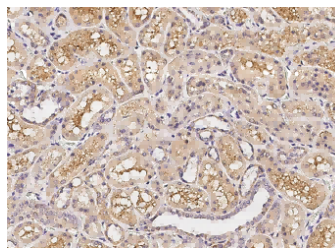
### Applications Recommended Dilution

<b>IHC-P</b>	1:50-1:200
--------------	------------

### Data



Immunohistochemistry of paraffin-embedded human tonsil using CD200 Monoclonal Antibody at dilution of 1:100.



Immunohistochemistry of paraffin-embedded human kidney using CD200 Monoclonal Antibody at dilution of 1:100.

### Preparation & Storage

<b>Storage</b>	This antibody can be stored at 2°C-8°C for one month without detectable loss of activity. Antibody products are stable for twelve months from date of receipt when stored at -20°C to -80°C. Preservative-Free. Avoid repeated freeze-thaw cycles.
<b>Shipping</b>	Ice bag

### Background

CD200 (OX2) and CD200R (OX2R) are membrane glycoprotein members of the Ig superfamily. CD200 is expressed by a range of cells, including neurons, epithelial cells, endothelial cells, fibroblasts, and lymphoid cells, while its receptor, CD200R, is found on myeloid and T cells. Interaction between CD200 and CD200R downregulates macrophage function and plays a role in immunosuppression and regulation of anti-tumor immune responses.

### For Research Use Only