

## Recombinant Bcl-XL Monoclonal Antibody

**catalog number: AN301019L**

**Note:** Centrifuge before opening to ensure complete recovery of vial contents.

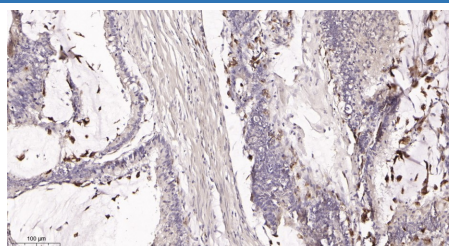
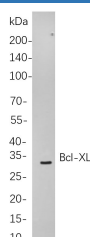
### Description

<b>Reactivity</b>	Human;Mouse;Rat
<b>Immunogen</b>	Recombinant Human Bcl-XL protein
<b>Host</b>	Rabbit
<b>Isotype</b>	IgG, $\kappa$
<b>Clone</b>	B770
<b>Purification</b>	Protein A
<b>Buffer</b>	PBS, 50% glycerol, 0.05% Proclin 300, 0.05% protein protectant.

### Applications

Applications	Recommended Dilution
IHC	1:200-1:1000
WB	1:1000-1:5000
IF	1:200-1:1000
ELISA	1:5000-1:20000
IP	1:50-1:200,

### Data



Western Blot with Recombinant Bcl-XL Monoclonal Antibody at dilution of 1:1000 dilution. Lane A: 3T3-L1 cells.

**Observed-MW:30 kDa**

**Calculated-MW:26 kDa**

Immunohistochemistry of paraffin-embedded human colon carcinoma tissue using Recombinant Bcl-XL Monoclonal Antibody at dilution of 1:200.

### Preparation & Storage

<b>Storage</b>	Store at -20°C Valid for 12 months. Avoid freeze / thaw cycles.
<b>Shipping</b>	Ice bag

### Background

The protein encoded by this gene belongs to the BCL-2 protein family. BCL-2 family members form hetero- or homodimers and act as anti- or pro-apoptotic regulators that are involved in a wide variety of cellular activities. The proteins encoded by this gene are located at the outer mitochondrial membrane, and have been shown to regulate outer mitochondrial membrane channel (VDAC) opening. VDAC regulates mitochondrial membrane potential, and thus controls the production of reactive oxygen species and release of cytochrome C by mitochondria, both of which are the potent inducers of cell apoptosis. Alternative splicing results in multiple transcript variants encoding two different isoforms. The longer isoform acts as an apoptotic inhibitor and the shorter isoform acts as an apoptotic activator.

### For Research Use Only

Toll-free: 1-888-852-8623  
Web: [www.elabscience.com](http://www.elabscience.com)

Tel: 1-832-243-6086  
Email: [techsupport@elabscience.com](mailto:techsupport@elabscience.com)

Fax: 1-832-243-6017

Rev. V1.2