

Recombinant Arylsulfatase A/ARSA Monoclonal Antibody

catalog number: **AN300107P**

Note: Centrifuge before opening to ensure complete recovery of vial contents.

Description

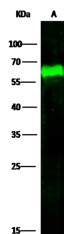
Reactivity	Human
Immunogen	Recombinant Human Arylsulfatase A / ARSA protein
Host	Rabbit
Isotype	IgG
Clone	12F1
Purification	Protein A
Buffer	0.2 µm filtered solution in PBS

Applications

Recommended Dilution

WB	1:500-1:2000
-----------	--------------

Data



Western Blot with Arylsulfatase A / ARSA Monoclonal Antibody at dilution of 1:500. Lane A: HepG2 Whole Cell Lysate, Lysates/proteins at 30 µg per lane.

Observed-MW:60 kDa

Calculated-MW:54 kDa

Preparation & Storage

Storage	This antibody can be stored at 2°C-8°C for one month without detectable loss of activity. Antibody products are stable for twelve months from date of receipt when stored at -20°C to -80°C. Preservative-Free. Avoid repeated freeze-thaw cycles.
Shipping	Ice bag

Background

The protein encoded by this gene hydrolyzes cerebroside sulfate to cerebroside and sulfate. Defects in this gene lead to metachromatic leucodystrophy (MLD), a progressive demyelination disease which results in a variety of neurological symptoms and ultimately death. Alternatively spliced transcript variants have been described for this gene.

For Research Use Only