

## Recombinant Rat CD302/CLEC13A Protein (Fc Tag)

**Catalog Number:** PKSR030177

**Note:** Centrifuge before opening to ensure complete recovery of vial contents.

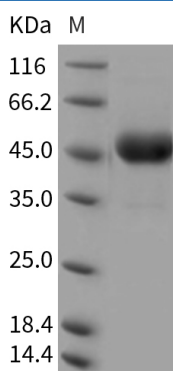
### Description

<b>Species</b>	Rat
<b>Source</b>	HEK293 Cells-derived Rat CD302/CLEC13A protein Met1-His165, with an C-terminal hFc
<b>Calculated MW</b>	43.7 kDa
<b>Observed MW</b>	47 kDa
<b>Accession</b>	NP_001013938.1
<b>Bio-activity</b>	Not validated for activity

### Properties

<b>Purity</b>	> 95 % as determined by reducing SDS-PAGE.
<b>Endotoxin</b>	< 1.0 EU per µg of the protein as determined by the LAL method.
<b>Storage</b>	Generally, lyophilized proteins are stable for up to 12 months when stored at -20 to -80 °C. Reconstituted protein solution can be stored at 4-8°C for 2-7 days. Aliquots of reconstituted samples are stable at < -20°C for 3 months.
<b>Shipping</b>	This product is provided as lyophilized powder which is shipped with ice packs.
<b>Formulation</b>	Lyophilized from sterile PBS, pH 7.4 Normally 5% - 8% trehalose, mannitol and 0.01% Tween 80 are added as protectants before lyophilization. Please refer to the specific buffer information in the printed manual.
<b>Reconstitution</b>	Please refer to the printed manual for detailed information.

### Data



> 95 % as determined by reducing SDS-PAGE.

### Background

### For Research Use Only

Toll-free: 1-888-852-8623  
Web: [www.elabscience.com](http://www.elabscience.com)

Tel: 1-832-243-6086  
Email: [techsupport@elabscience.com](mailto:techsupport@elabscience.com)

Fax: 1-832-243-6017

CD302/CLEC13A (C-type lectin domain family 13 member A), also known as C-type lectin receptor DCL-1, is a type I transmembrane C-type lectin DCL-1/CD302. DCL-1 protein was highly conserved among the human, mouse, and rat orthologs. DCL-1 ectodomain contains only one CRD, whereas other type I transmembrane C-type lectins contain more than one domain (e.g. selectins and MMR). DCL-1 CP contains several putative motifs, including a Tyr-based internalization, a cluster of acidic amino acids, and Ser and Tyr phosphorylation motifs, suggesting that DCL-1 CP mediates not only endocytosis and late endosome targeting but also signaling. DCL-1 may be another cell/matrix adhesion receptor integrated in cell adhesion complexes and that DCL-1 dysfunction may affect APC adhesion and migration, causing suppression of APC function.