

# Recombinant Human S100P/S100E Protein (His Tag)

Catalog Number: PKSH033009



**Note:** Centrifuge before opening to ensure complete recovery of vial contents.

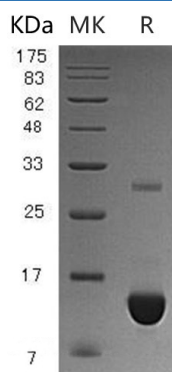
## Description

<b>Species</b>	Human
<b>Mol_Mass</b>	12.6 kDa
<b>Accession</b>	P25815
<b>Bio-activity</b>	Not validated for activity

## Properties

<b>Purity</b>	> 95 % as determined by reducing SDS-PAGE.
<b>Endotoxin</b>	< 1.0 EU per µg of the protein as determined by the LAL method.
<b>Storage</b>	Store at < -20°C, stable for 6 months. Please minimize freeze-thaw cycles.
<b>Shipping</b>	This product is provided as liquid. It is shipped at frozen temperature with blue ice/gel packs. Upon receipt, store it immediately at < - 20°C.
<b>Formulation</b>	Supplied as a 0.2 µm filtered solution of 20mM Tris-HCl, 1mM DTT, 100mM NaCl, 20% Glycerol, pH 8.0.
<b>Reconstitution</b>	Not Applicable

## Data



> 95 % as determined by reducing SDS-PAGE.

## Background

Protein S100-P (S100P) belongs to the S100 family of Calcium-Binding Proteins. S100P is 95 amino acids in length and it contains 2 EF-Hand Calcium-Binding Motifs. The EF-Hand Motif binds calcium; which likely alters molecular conformation. S100 proteins are localized in the cytoplasm and/or nucleus of a wide range of cells and it is involved in the regulation of a number of cellular processes such as cell cycle progression and differentiation. In addition to binding Ca; S100P also binds Zn and Mg; and may play a role in the etiology of prostate cancer.

## For Research Use Only

A Reliable Research Partner in Life Science and Medicine  
Tel: 400-999-2100

Email: [techsupport@elabscience.cn](mailto:techsupport@elabscience.cn)

Web: [www.elabscience.cn](http://www.elabscience.cn)

Rev. V3.2