

## FITC Anti-Human CD45RO Antibody[UCHL1]

Catalog Number: E-AB-F1139C

**Note:** Centrifuge before opening to ensure complete recovery of vial contents.

### Description

|                                |  |
|--------------------------------|--|
| <b>Reactivity</b>              | Human  |
| <b>Host</b>                    | Mouse  |
| <b>Isotype</b>                 | Mouse IgG2a, κ   |
| <b>Clone No.</b>               | UCHL1  |
| <b>Isotype Control</b>         | FITC Mouse IgG2a, κ Isotype Control[C1.18.4] [Product E-AB-F09802C]  |
| <b>Conjugation</b>             | FITC   |
| <b>Conjugation Information</b> | FITC is designed to be excited by the Blue laser (488 nm) and detected using an optical filter centered near 530 nm (e.g., a 525/40 nm bandpass filter). |
| <b>Storage Buffer</b>          | Phosphate buffered solution, pH 7.2, containing 0.09% sodium azide and 1% BSA.   |

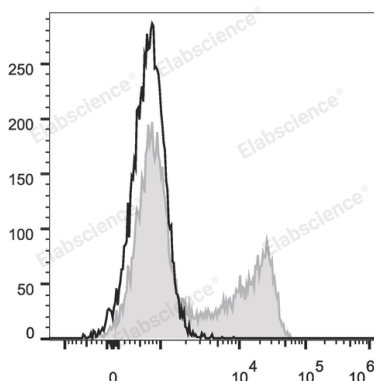
### Applications

### Recommended usage

#### FCM

Each lot of this antibody is quality control tested by flow cytometric analysis. **The amount of the reagent is suggested to be used 5 μL of antibody per test (million cells in 100 μL staining volume or per 100 μL of whole blood).** Please check your vial before the experiment. Since applications vary, the appropriate dilutions must be determined for individual use.

### Data



Human peripheral blood lymphocytes are stained with FITC Anti-Human CD45RO Antibody (filled gray histogram) or Mouse IgG2a, κ Isotype Control FITC (empty black histogram).

### Preparation & Storage

|                 |   |
|-----------------|---|
| <b>Storage</b>  | Keep as concentrated solution.<br>This product can be stored at 2-8°C for 12 months. Please protected from prolonged exposure to light and do not freeze. |
| <b>Shipping</b> | Ice bag   |

### Antigen Information

|                |      |
|----------------|------|
| <b>Gene ID</b> | 5788 |
|----------------|------|

### For Research Use Only

## Background

CD45RO is a 180 kD single chain membrane glycoprotein. It is a splice variant of tyrosine phosphatase CD45, lacking the A, B, and C determinants. The CD45RO isoform is expressed on activated and memory T cells, some B cell subsets, activated monocytes/macrophages, and granulocytes. CD45RO enhances both T cell receptor and B cell receptor signaling mediated activation. CD45 and its isoforms non-covalently associate with lymphocyte phosphatase-associated phosphoprotein (LPAP) on T and B lymphocytes. CD45 has been reported to be associated with several other cell surface antigens including CD1, CD2, CD3, and CD4. CD45 has also been reported to bind galectin-1 and CD22. CD45 isoform expression can change in response to cytokines.