

RBM38 Polyclonal Antibody

Catalog Number: E-AB-16755

Note: Centrifuge before opening to ensure complete recovery of vial contents.

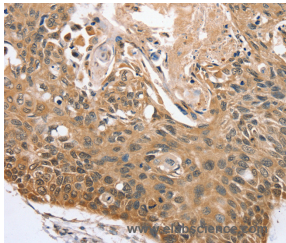
Description

Reactivity	Human, Mouse
Immunogen	Synthetic peptide of human RBM38
Host	Rabbit
Isotype	IgG
Purification	Affinity purification
Conjugation	Unconjugated
Formulation	PBS with 0.05% sodium azide and 50% glycerol, PH7.4

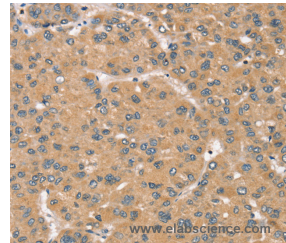
Applications Recommended Dilution

IHC	1:50-1:300
------------	------------

Data



Immunohistochemistry of paraffin-embedded Human esophagus cancer tissue using RBM38 Polyclonal Antibody at dilution 1:45



Immunohistochemistry of paraffin-embedded Human liver cancer tissue using RBM38 Polyclonal Antibody at dilution 1:45

Preparation & Storage

Storage Store at -20°C. Avoid freeze / thaw cycles.

Background

RBM38 is a cell cycle protein found in the cytosol and the nucleus that exists as two alternatively spliced isoforms, 1 (RNPC1a) and 2 (RNPC1b), of 239 and 121 amino acids, respectively. Independent of p53 expression, RBM38 isoform 1 induces cell cycle arrest in G1 phase through Human, Mouse maintaining transcript stability at the 3'-UTR of p21, a regulator of cell cycle progression at S phase. RBM38 is also an mRNA splicing factor that regulates the expression of FGFR2. RBM38 contains one RRM (RNA recognition motif) domain.

For Research Use Only

A Reliable Research Partner in Life Science and Medicine

Toll-free: 1-888-852-8623

Web: www.elabscience.com

Tel: 1-832-243-6086

Email: techsupport@elabscience.com

Fax: 1-832-243-6017