

ISM1 Polyclonal Antibody

Catalog Number: E-AB-52045



Note: Centrifuge before opening to ensure complete recovery of vial contents.

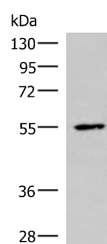
Description

Reactivity	Human, Mouse
Immunogen	Synthetic peptide of human ISM1
Host	Rabbit
Isotype	IgG
Purification	Antigen affinity purification
Conjugation	Unconjugated
Formulation	PBS with 0.05% NaN ₃ and 40% Glycerol, pH7.4

Applications Recommended Dilution

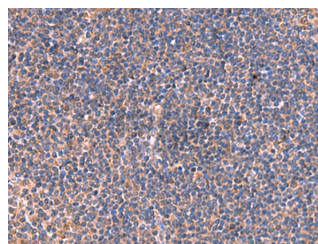
WB	1:1000-1:5000
IHC	1:40-1:200
ELISA	1:5000-1:10000

Data



Western blot analysis of HepG2 cell lysate using ISM1 Polyclonal Antibody at dilution of 1:1000

Observed Mw: Refer to figures
Calculated Mw: 52 kDa



Immunohistochemistry of paraffin-embedded Human tonsil tissue using ISM1 Polyclonal Antibody at dilution of 1:40 (x200)

Preparation & Storage

Storage Store at -20°C. Avoid freeze / thaw cycles.

Background

Acts as an angiogenesis inhibitor.

For Research Use Only

A Reliable Research Partner in Life Science and Medicine

Toll-free: 1-888-852-8623

Web: www.elabscience.com

Tel: 1-832-243-6086

Email: techsupport@elabscience.com

Fax: 1-832-243-6017