

Recombinant Human SUMF1 Protein (His Tag)

Catalog Number: PKSH033084

Note: Centrifuge before opening to ensure complete recovery of vial contents.

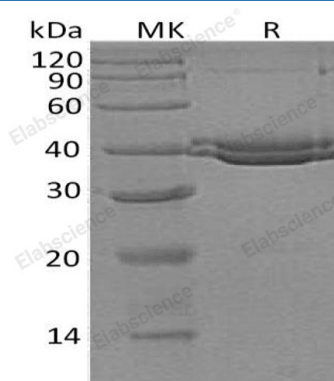
Description

Species	Human
Source	HEK293 Cells-derived Human SUMF1 protein Ser34-Asp374, with an C-terminal His
Calculated MW	38.4 kDa
Observed MW	38-42 kDa
Accession	Q8NBK3
Bio-activity	Not validated for activity

Properties

Purity	> 95 % as determined by reducing SDS-PAGE.
Concentration	Subject to label value.
Endotoxin	< 1.0 EU per µg of the protein as determined by the LAL method.
Storage	Store at < -20°C, stable for 6 months. Please minimize freeze-thaw cycles.
Shipping	This product is provided as liquid. It is shipped at frozen temperature with blue ice/gel packs. Upon receipt, store it immediately at < -20°C.
Formulation	Supplied as a 0.2 µm filtered solution of 20mM Tris-HCl, 150mM NaCl, 2mM CaCl ₂ , 10% Glycerol, pH 7.5.

Data



> 95 % as determined by reducing SDS-PAGE.

Background

Human Sulfatase Modifying Factor 1 (SUMF1) is a 42kDa protein. SUMF1 is a Ca²⁺-binding member of the sulfatase-modifying factor family. SUMF1 is a soluble ER luminal glycoprotein, it converts inactive sulfatases into an active form by transforming a catalytic site cysteine into a formylglycine residue. In the ER, SUMF1 can exist as either a monomer, or a disulfide-linked homodimer or a heterodimer with SUMF2. Three splice isoforms are known.

For Research Use Only

Toll-free: 1-888-852-8623
Web: www.elabscience.com

Tel: 1-832-243-6086
Email: techsupport@elabscience.com

Fax: 1-832-243-6017