

PAIP1 Polyclonal Antibody

Catalog Number: E-AB-19272



Note: Centrifuge before opening to ensure complete recovery of vial contents.

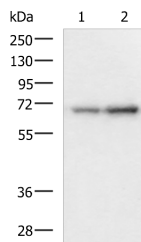
Description

Reactivity	Human, Mouse
Immunogen	Fusion protein of human PAIP1
Host	Rabbit
Isotype	IgG
Purification	Antigen affinity purification
Conjugation	Unconjugated
Formulation	PBS with 0.05% NaN ₃ and 40% Glycerol, pH7.4

Applications Recommended Dilution

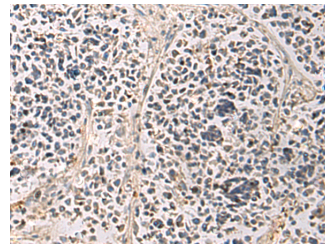
WB	1:500-1:2000
IHC	1:50-1:200
ELISA	1:5000-1:10000

Data

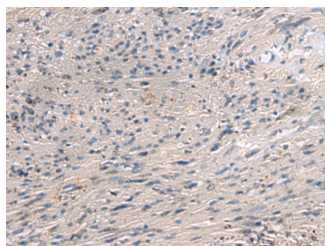


Western blot analysis of 293T and HepG2 cell lysates using PAIP1 Polyclonal Antibody at dilution of 1:1150

Observed MW: Refer to figures
Calculated Mw: 54 kDa



Immunohistochemistry of paraffin-embedded Human breast cancer tissue using PAIP1 Polyclonal Antibody at dilution of 1:80 (×200)



Immunohistochemistry of paraffin-embedded Human brain tissue using PAIP1 Polyclonal Antibody at dilution of 1:80 (×200)

Preparation & Storage

Storage Store at -20°C. Avoid freeze / thaw cycles.

Background

For Research Use Only

A Reliable Research Partner in Life Science and Medicine

Toll-free: 1-888-852-8623

Web: www.elabscience.com

Tel: 1-832-243-6086

Email: techsupport@elabscience.com

Fax: 1-832-243-6017

PAIP1 Polyclonal Antibody

Catalog Number: E-AB-19272



The protein encoded by this gene interacts with poly(A)-binding protein and with the cap-binding complex eIF4A. It is involved in translational initiation and protein biosynthesis. Overexpression of this gene in COS7 cells stimulates translation. Alternative splicing occurs at this locus and three transcript variants encoding three distinct isoforms have been identified.

For Research Use Only

A Reliable Research Partner in Life Science and Medicine

Toll-free: 1-888-852-8623

Tel: 1-832-243-6086

Fax: 1-832-243-6017

Web: www.elabscience.com

Email: techsupport@elabscience.com