

# Recombinant Human IGSF11/BTIGSF Protein (His Tag)



Catalog Number:PKSH030731

**Note:** Centrifuge before opening to ensure complete recovery of vial contents.

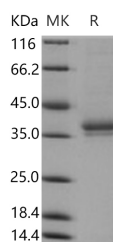
## Description

<b>Synonyms</b>	BT-IgSF;CT119;CXADRL1;Igsf13;VSIG3;CXADR like 1
<b>Species</b>	Human
<b>Expression Host</b>	HEK293 Cells
<b>Sequence</b>	Met 1-Gly 240
<b>Accession</b>	AAH34411.1
<b>Calculated Molecular Weight</b>	24.6 kDa
<b>Observed molecular weight</b>	36 kDa
<b>Tag</b>	C-His

## Properties

<b>Purity</b>	> 85 % as determined by reducing SDS-PAGE.
<b>Endotoxin</b>	< 1.0 EU per µg of the protein as determined by the LAL method.
<b>Storage</b>	Generally, lyophilized proteins are stable for up to 12 months when stored at -20 to -80°C. Reconstituted protein solution can be stored at 4-8°C for 2-7 days. Aliquots of reconstituted samples are stable at < -20°C for 3 months.
<b>Shipping</b>	This product is provided as lyophilized powder which is shipped with ice packs.
<b>Formulation</b>	Lyophilized from sterile PBS, pH 7.4 Normally 5 % - 8 % trehalose, mannitol and 0.01 % Tween80 are added as protectants before lyophilization. Please refer to the specific buffer information in the printed manual.
<b>Reconstitution</b>	Please refer to the printed manual for detailed information.

## Data



> 85 % as determined by reducing SDS-PAGE.

## Background

Immunoglobulin superfamily member 11 (IGSF11) are expressed on the plasma membrane in the testis and brain. These IGSF proteins undergo final modifications during capacitation and/or the acrosome reaction. IGSF proteins share significant homology with endothelial cell-selective adhesion molecule and coxsackievirus and adenovirus receptor, which mediates cell attachment and homotypic intercellular interactions. In clinical, the IGSF11 has been reported to over expressed in colorectal cancers and hepatocellular carcinomas as well as intestinal-type gastric cancers compared to their corresponding non- cancerous tissues. The IGSF11 has also been found expressed abundantly in testis and ovary and the IGSF11 can be used as a candidate of cancer-testis antigen.

## For Research Use Only

A Reliable Research Partner in Life Science and Medicine

Toll-free: 1-888-852-8623

Web: [www.elabscience.com](http://www.elabscience.com)

Tel: 1-832-243-6086

Email: [techsupport@elabscience.com](mailto:techsupport@elabscience.com)

Fax: 1-832-243-6017