

Recombinant E-Selectin/CD62e/SELE Monoclonal Antibody

catalog number: **AN300322P**

Note: Centrifuge before opening to ensure complete recovery of vial contents.

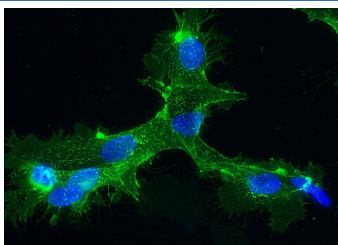
Description

Reactivity	Human
Immunogen	Recombinant Human E-Selectin/CD62e/SELE Protein
Host	Rabbit
Isotype	IgG
Clone	9F1
Purification	Protein A
Buffer	0.2 µm filtered solution in PBS

Applications Recommended Dilution

ICC/IF	1:20-1:100
---------------	------------

Data



Immunofluorescence analysis of CD62E in TNF-α stimulated HUVEC cells. Cells were fixed with 4% PFA, blocked with 10% serum, and incubated with rabbit anti-human ABHD14B monoclonal antibody (1:60) at 4°C overnight. Then cells were stained with the Alexa Fluor® 488-conjugated Goat Anti-rabbit IgG secondary antibody (green) and counterstained with DAPI (blue). Positive staining was localized to cells membrane.

Preparation & Storage

Storage	This antibody can be stored at 2°C-8°C for one month without detectable loss of activity. Antibody products are stable for twelve months from date of receipt when stored at -20°C to -80°C. Preservative-Free. Avoid repeated freeze-thaw cycles.
Shipping	Ice bag

Background

E-Selectin, also known as Endothelial Leukocyte Adhesion Molecule 1 (ELAM-1), and Leukocyte-Endothelial Cell Adhesion Molecule 2 (LECAM-2), has been designated CD62E. It is a cell-surface glycoprotein expressed by activated endothelium and it mediates the adhesion of blood neutrophils.

For Research Use Only