

## Elab Fluor® Red 780 Anti-Mouse CD3 Antibody[17A2]

**Catalog Number:** E-AB-F1013US

**Note:** Centrifuge before opening to ensure complete recovery of vial contents.

### Description

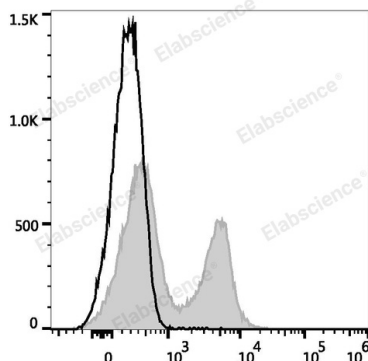
<b>Reactivity</b>	Mouse
<b>Host</b>	Rat
<b>Isotype</b>	Rat IgG2b, $\kappa$
<b>Clone No.</b>	17A2
<b>Isotype Control</b>	Elab Fluor® Red 780 Rat IgG2b, $\kappa$ Isotype Control[LTF-2] [Product E-AB-F09843S]
<b>Conjugation</b>	Elab Fluor® Red 780
<b>Conjugation Information</b>	Elab Fluor® Red 780 is designed to be excited by the Red (627-640 nm) laser and detected using an optical filter centered near 770 nm (e.g., a 780/60 nm bandpass filter).
<b>Storage Buffer</b>	Phosphate buffered solution, pH 7.2, containing 0.09% stabilizer and 1% protein protectant.

### Applications

### Recommended usage

<b>FCM</b>	Each lot of this antibody is quality control tested by flow cytometric analysis. Please check your vial before the experiment. Since applications vary, the appropriate dilutions must be determined for individual use. We suggest each investigator should titrate the reagent to obtain optimal results [The recommended concentration is 0.1-1 $\mu\text{g}/10^6$ cells in 100 $\mu\text{L}$ volume].
------------	---

### Data



C57BL/6 murine splenocytes are stained with Elab Fluor® Red 780 Anti-Mouse CD3 Antibody (filled gray histogram). Unstained splenocytes (empty black histogram) are used as control.

### Preparation & Storage

<b>Storage</b>	Keep as concentrated solution. This product can be stored at 2-8°C for 12 months. Please protected from prolonged exposure to light and do not freeze.
<b>Shipping</b>	Ice bag

### Antigen Information

<b>Alternate Names</b>	CD3;CD3E/D/G/Z;CD3e/d/g/z;T-cell surface glycoprotein CD 3epsilon/delta/gamma/zeta chain
<b>Uniprot ID</b>	P04235;P11942;P22646;P24161

### For Research Use Only

**Gene ID**

12502

**Background**

CD3, also known as T3, is a member of the Ig superfamily and primarily expressed on T cells, NK-T cells, and at different levels on thymocytes during T cell differentiation. CD3 is composed of CD3 $\epsilon$ ,  $\delta$ ,  $\gamma$  and  $\zeta$  chains. It forms a TCR complex by associating with TCR  $\alpha/\beta$  or  $\gamma/\delta$  chains. CD3 plays a critical role in TCR signal transduction, T cell activation, and antigen recognition by binding the peptide/MHC antigen complex.