

Recombinant ACTH Monoclonal Antibody

catalog number: **AN301965L**

Note: Centrifuge before opening to ensure complete recovery of vial contents.

Description

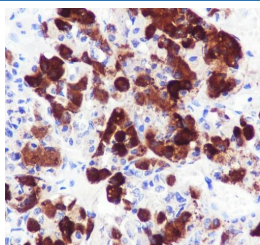
Reactivity	Human;Rat;
Immunogen	Recombinant human ACTH fragment
Host	Rabbit
Isotype	IgG, κ
Clone	A681
Purification	Protein A purified
Buffer	PBS, 50% glycerol, 0.05% Proclin 300, 0.05% protein protectant.

Applications

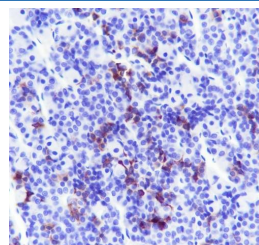
Recommended Dilution

IHC	1:500-1:1000
------------	--------------

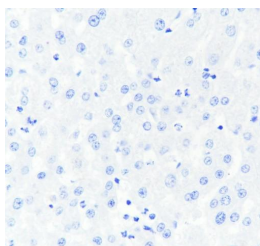
Data



Immunohistochemistry of paraffin-embedded Human pituitary using ACTH Monoclonal Antibody at dilution of 1:1000.



Immunohistochemistry of paraffin-embedded Rat pituitary using ACTH Monoclonal Antibody at dilution of 1:1000.



Immunohistochemistry of paraffin-embedded Human liver(Negative tissue) using ACTH Monoclonal Antibody at dilution of 1:100.

Preparation & Storage

Storage	Store at -20°C Valid for 12 months. Avoid freeze / thaw cycles.
Shipping	Ice bag

Background

ACTH, adrenocorticotrophic hormone, is a peptide hormone cleavage product of the POMC protein produced by the pituitary gland. ACTH plays an important role in stress and circadian rhythm signaling. Its primary action is on the adrenal cortex, where its binding induces the secretion of glucocorticoid steroid hormones. The peptide sequence for this hormone is highly evolutionarily conserved amongst mammals. Specifically, for mouse and rat, this sequence shares 100% identity.

For Research Use Only

Toll-free: 1-888-852-8623
Web: www.elabscience.com

Tel: 1-832-243-6086
Email: techsupport@elabscience.com

Fax: 1-832-243-6017

Rev. V1.1